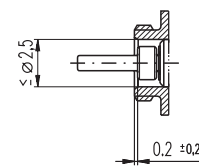
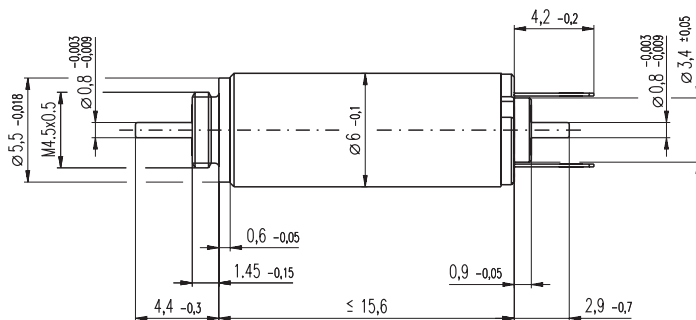
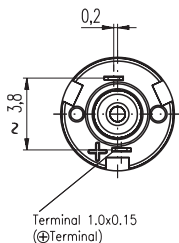


RE 6 $\varnothing 6$ mm, Precious Metal Brushes, 0.3 Watt



M 2.5:1

- Stock program
- Standard program
- Special program (on request)

Order Number

302018	302019	302020	302021
--------	--------	--------	--------

Motor Data (provisional)

		302018	302019	302020	302021	
Values at nominal voltage						
1	Nominal voltage	V	1.5	3.0	4.5	6.0
2	No load speed	rpm	20000	20200	20200	20200
3	No load current	mA	47.5	23.9	15.9	11.9
4	Nominal speed	rpm	4880	6100	5820	5760
5	Nominal torque (max. continuous torque)	mNm	0.271	0.292	0.287	0.286
6	Nominal current (max. continuous current)	A	0.447	0.240	0.157	0.118
7	Stall torque	mNm	0.378	0.438	0.423	0.420
8	Starting current	A	0.576	0.333	0.215	0.160
9	Max. efficiency	%	52	54	54	54
Characteristics						
10	Terminal resistance	Ω	2.61	9.00	21.0	37.5
11	Terminal inductance	mH	0.00774	0.0310	0.0697	0.124
12	Torque constant	mNm / A	0.657	1.31	1.97	2.63
13	Speed constant	rpm / V	14500	7270	4850	3630
14	Speed / torque gradient	rpm / mNm	57700	49800	51500	51900
15	Mechanical time constant	ms	9.00	8.68	8.75	8.75
16	Rotor inertia	gcm ²	0.0149	0.0166	0.0162	0.0161

Specifications

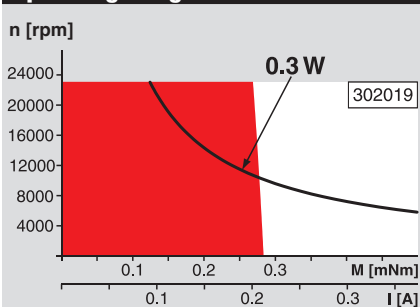
Thermal data	
17	Thermal resistance housing-ambient 77 K / W
18	Thermal resistance winding-housing 16.2 K / W
19	Thermal time constant winding 1.58 s
20	Thermal time constant motor 88.5 s
21	Ambient temperature -20 ... +65°C
22	Max. permissible winding temperature +85°C
Mechanical data (sleeve bearings)	
23	Max. permissible speed 23000 rpm
24	Axial play 0.02 - 0.1 mm
25	Radial play 0.012 mm
26	Max. axial load (dynamic) 0.15 N
27	Max. force for press fits (static) 10 N
28	Max. radial loading, 4 mm from flange 0.6 N

Other specifications

29	Number of pole pairs	1
30	Number of commutator segments	5
31	Weight of motor	2.3 g
	Ceramic shaft	

Values listed in the table are nominal.
Explanation of the figures on page 47.

Operating Range



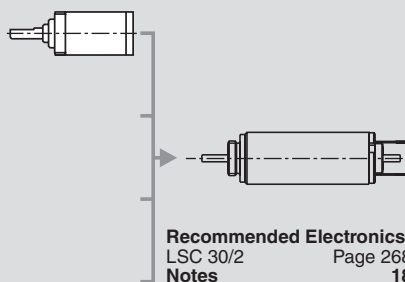
Comments

- Continuous operation**
In observation of above listed thermal resistance (lines 17 and 18) the maximum permissible winding temperature will be reached during continuous operation at 25°C ambient.
= Thermal limit.
- Short term operation**
The motor may be briefly overloaded (recurring).
- Assigned power rating**

maxon Modular System

Overview on page 16 - 21

Planetary Gearhead
 $\varnothing 6$ mm
0.002 - 0.03 Nm
Page 203



Recommended Electronics:
LSC 30/2 Page 268
Notes 18