

# NEW PRODUCTS

## Intelligent camera XCI-SX1

The XCI-SX1 is equipped with a 1/2 type IT progressive scan CCD capable of square pixel/whole pixel read-out ideal for high-resolution image processing applications. While performance has been enhanced for a variety of fields, this camera maintains the high image quality, vibration resistance, and shock resistance of the highly acclaimed XC series industrial cameras.

→ Page 60

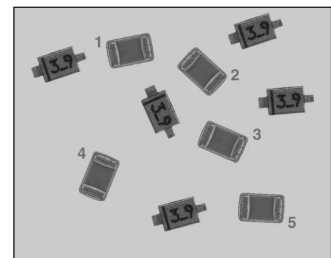


### ◆ Features

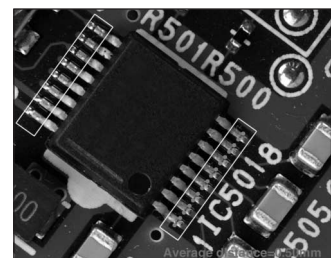
- All-in-one compact body
- x86 CPU
- Effective lines: 1280 (H) x 1024 (V) (SXGA)
- High-resolution SXGA-sized images  
Captured at: 15 fps
- Binning function  
Vertical/horizontal pixel blending
- Partial scan function  
Vertical/horizontal partial scan
- Input voltage:  
Compatible with DC +12 V, +24 V
- 128 MB Compact Flash memory card
- 256 MB DDR-SDRAM
- Compatible with TCP/IP, HTTP, FTP
- Equipped with Digital I/O and RS-232C interface
- Built-in Linux kernel
- SDK for Linux and camera driver for Windows are available

### ◆ Application Examples

- Bar code reading
- Character recognition
- Measurement Pattern matching, etc.



SONY Smart Camera  
Sensor: SXGA, B/W, 15fps  
Processor: x86, 400MHz  
I/F: Ethernet, serial, VGA,  
USB1.1, digital I/O



Average distance: 100mm

# INFORMATION

## **IEEE1394b Digital Interface Compliant**

(B/W)

### **XCD-V50**

(Color)

### **XCD-V50CR**



The XCD-V50 series are ultra-compact, light weight digital video cameras and utilizing IEEE1394b-2002 digital interface compliance up to 800Mbps. The XCD-V50 is a monochrome model and XCD-V50CR is a RAW data output using the RGB Bayer pattern.

➔ Page 72

#### ◆Features

- IEEE1394b-compatible (High-speed transfer: 800 Mbps/400 Mbps)
- 1/3 type IT progressive scan CCD (VGA output) (60 fps)
- Compact size (Same as XC-ST series)
- Monochrome 16-bit mode (lower 14 bits valid)
- Low power consumption
- IIDC Ver. 1.31 compliant
- Frame rate: 60/30/15 fps
- Screw-type 1394 connector

## **Color camera block with new functions and 18x optical zoom lens**

### **FCB-IX47C**

### **FCB-IX47CP**



The FCB-IX47C is a color camera block with newly added privacy zone masking and E-flip functions.

➔ Page 114

#### ◆Features

- 380,000 pixel 1/4 type Super HAD CCD (FCB-IX47C)
- 440,000 pixel 1/4 type Super HAD CCD (FCB-IX47CP)
- Minimum illumination: 1.0 lx (At normal shutter speed, 50 IRE)
- 72x zoom lens (18x optical, 4x digital)
- Lens: f=4.1 to 73.8 mm (F1.4 to F3.0)
- New privacy zone masking (PZM) function
- Electronic-Flip (E-Flip) for capturing images in the proper orientation.