



FEATURES

- Magnetic (ARS) or Optic (ARC) principle measurement systems
- Special spindle with special screw
- 58mm body diameter
- 1024 pulse resolution
- With special socket connection or optional cable
- Reverse polarity and short circuit protection
- High operating speed 6000 RPM

The ARS / ARC-S-1XP8001 series has a specially manufactured shaft structure. The main body of the shaft is 12 mm and the end part is a 8 mm thread. The products have a standard diameter of 58mm.

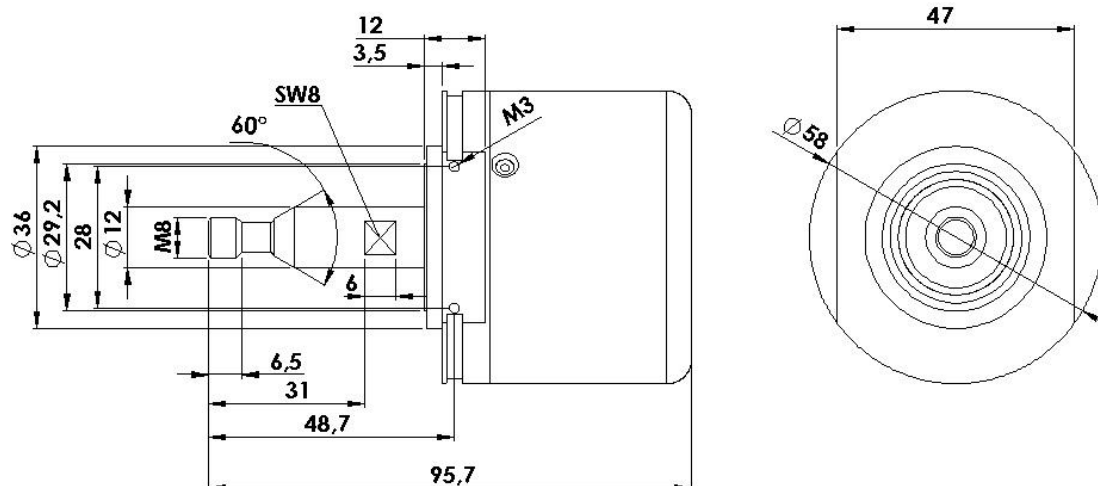
Especially automation applications that require motor speed control, speed measurement, length measurement, all sorts of machinery sector etc. are frequently used.

USED SECTORS

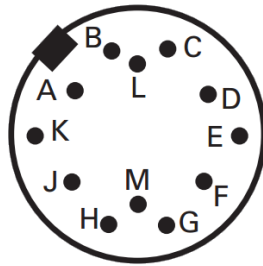
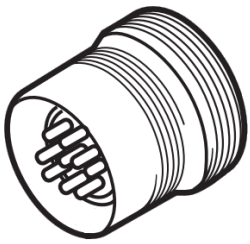
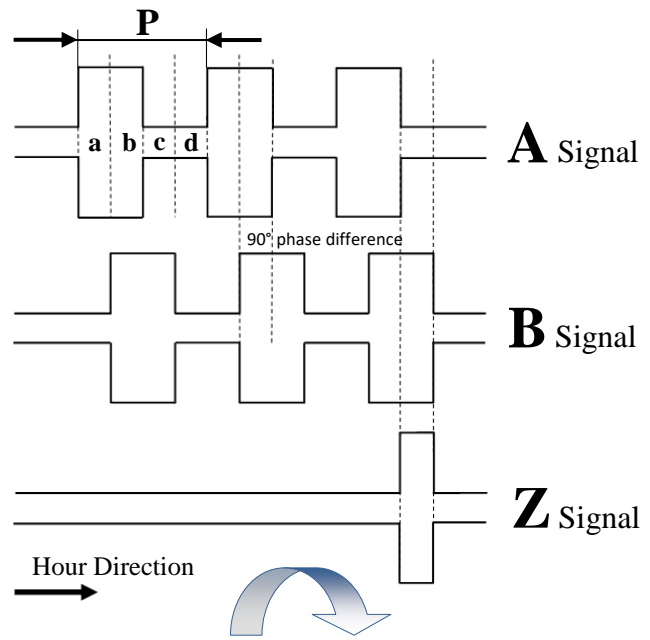
- Motor Speed Control
- Textile Machinery
- All kinds of Automation Applications

Technical specifications	
Resolution/ per tour	Standard 1024 pulse (other options optional)
Operating Principle	ARS Series : Magnetik ARC Series : Optic
Output Signal Type	Push-Pull or TTL RS422 Line Driver
Electrical Connexion	Standard M16 12 pin socket, other models optional
Output Signals	A B Z /A /B /Z
Input Current	Max. 60 mA per channel
Supply	10...30 VDC ±%20 , 5 VDC ±%5 , 5...24 VDC ±%20 , 5...30 VDC ±%20
Connection Class	Reverse polarity and short circuit protection are available.
Response Frequency	50 – 300KHZ
Mechanical Measurements	
Shaft Type	Special type with screw
Mechanical Measurements	58 mm body diameter
Operating Temperature	-25°...+85°
Starting Torque	0,5Ncm
Body	Main body: Steel Sheet Flange: Aluminum
Maximum Operating Speed	6000 RPM
Protection Class	IP54
Weight	250 gram

Mechanical Measurements



Signal	Cable Color	Socket Pin Number
A	YELLOW	E
/B	WHITE	A
+VCC Supply	RED	B - M
0 V	BLACK	K-L
/A	BLUE	F
B	GREEN	H
/Z	GREY	D
Z	PINK	C
GND	SHIELD	Socket body



Sipariş Detayı

Operating Principle

S: MAGNETIC
C: OPTIC

Shaft type

S: Shaft

Body Diameter

058 : 58 mm

Resolution

Standard 1024 = 1024 pulse

** Other pulse options can be selected from 4 pulse 4096 pulse.

Output Signals

6 : A, /A, B, /B, Z, /Z
2 : A, B
3 : A, B, Z
4 : A, /A, B, /B

Cable Direction

A : Backside
Y : Sidewise
AS : Backside + Spiral

A R S - S - 0 5 8 - 1 0 2 4 - H P L - 6 - S 1 6 - Y - 1 X P 8 0 0 1

Feed and Output Type

PP (PUSH PULL) : 10 ... 30 VDC Supply
: 10 ... 30 VDC Push-Pull Output
TTL : 5 VDC Supply
: 5 VDC TTL RS422 Line Driver Output
HPL : 5 ... 30 VDC Supply
: 5 ... 30 VDC Push-Pull Output

Cable Length

S16 : 12 PIN (M16 SOCKET)
5M : 5 M
10M : 10 M

* Optionally, it is done in the desired length.

Special production series

Specially designed shaft main body 12 mm, end section with threaded type 8 mm

1XP8001-1 Feed: 10-30VDC
1XP8001-2 Feed: 5VDC