

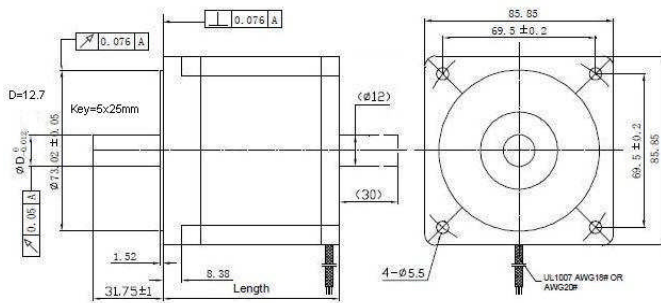
## 2-phase Hybrid Stepping Motor, DM86xxE



Item	Specifications
Step Angle	1.8°
Step Angle Accuracy	±5% (full step, no load)
Resistance Accuracy	±10%
Inductance Accuracy	±20%
Temperature Rise	80°C Max. (rated current, 2 phase on)
Ambient Temperature	-20°C ~ +50°C
Insulation Resistance	100MΩMin., 500VDC
Dielectric Strength	500VAC for one minute
Shaft Radial Play	0.02Max. (450 g-load)
Shaft Axial Play	0.08Max. (450 g-load)
Max. radial force	220N (20mm from the flange)
Max. axial force	60N



Model	Parallel /Series	Current /Phase (A)	Resistance /Phase (Ω)	Inductance /Phase (mH)	Holding Torque (N·m)	Rotor Inertia (g·cm <sup>2</sup> )	Weight (kg)	Length (mm)
DM8665E	P	2.8	0.7	1.95	3.40	1000	1.7	65
	S	1.4	2.8	7.8				
DM8680E	P	4.24	0.375	1.7	4.6	1400	2.3	80
	S	2.12	1.5	6.8				
DM86118E	P	4.2	0.45	3	8.70	2700	3.8	118
	S	2.1	1.8	12				



Model	Recommended Driver
DM8665E	DM403A/T DMD605, DMD808A
DM8680E	
DM86118E	

