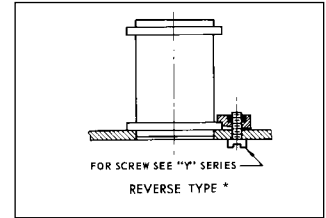
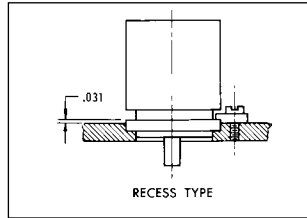
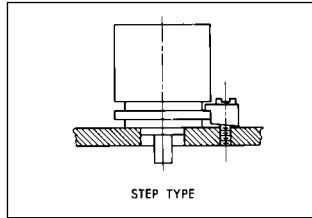
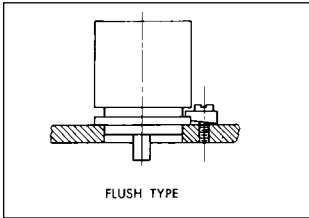


MOTOR MOUNT CLEATS

Instant Nulling (Zeroing), Quick Releasing, Self Locking



TO DETERMINE BOLT CIRCLE FOR CLEAT LOCATIONS	
FOR CLEAT NO.	USE THE LARGER OF 2 TEST BOLT CIRCLES
L3-(1-12) L3-(30-31)	ADD .270" (2 x E) TO MAX. FLANGE DIA. OR ADD .400" TO MAX. DIA. OF BASE OF GROOVE
L3-(20-24)	ADD .192" (2 x E) TO MAX. FLANGE DIA. OR ADD .275" TO MAX. DIA. OF BASE OF GROOVE

SPECIFICATIONS

MATERIAL

Clamp: Sintered stainless steel Type 316; tensile strength 60,000 psi; shear strength 25,000 psi.

Screw: Slotted pan head CRES per MS-35233 and MS-35234.

Insert: Nylon (Polyamide) Type 1 per ASTM D 4066. Natural color.

FINISH

Screw: Treated per MIL-S-5002.

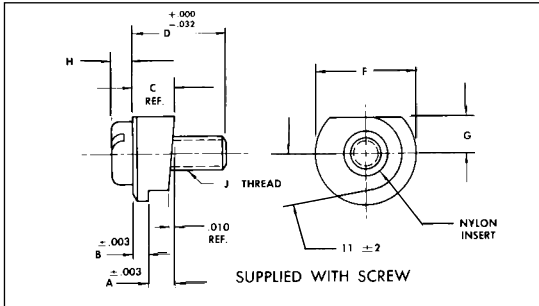
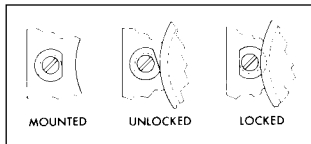
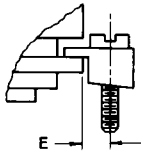
Clamp: As cast and tumbled.

Operating Temperature Range: -55°C to +177°C.

Vibration: 5 to 2000 cps at 15 g's acceleration with size 15 synchro.

Shock: 2000 ft. lb. shock, size 15 synchro per MIL-S-901.

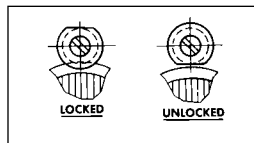
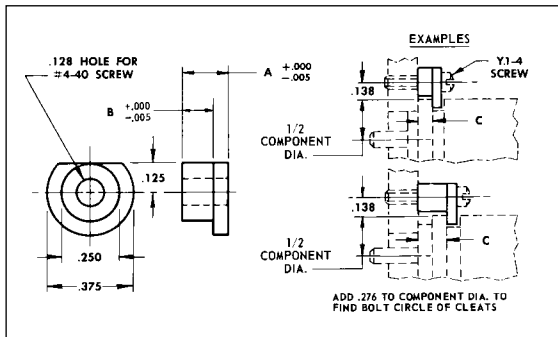
Meets all requirements of MIL-E-5272C and MIL-S-901.



Type Mount	A	B	C	D	E	F	G	H	J	Part No.
Flush & Recess	.031	.040	.071	.312						L3-1
Flush	.062	.040	.102	.312						L3-2
Flush	.062	.050	.112	.375						L3-3
Flush	.062	.063	.125	.375						L3-4
Flush	.093	.040	.133	.375	.135	.390	.125	.068	#4-40	L3-6
Flush	.093	.050	.143	.375		.385		Max.		L3-7
Flush	.093	.063	.156	.375						L3-8
Step	.125	.050	.175	.375						L3-9
Step	.156	.040	.196	.375						L3-10
Step	.225	.063	.288	.437						L3-11
Flush	.250	.063	.312	.625						L3-12
Flush & Recess	.031	.040	.071	.250						L3-20
Flush	.062	.040	.102	.250						L3-22
Flush	.093	.040	.133	.312	.096	.265	.091	.053	#2-56	L3-23
Step	.125	.040	.165	.312		.260		Max.		L3-24
Reverse	.062	.063	.125	*	.135	.390	.125	*	#4-40	L3-30*
Reverse	.093	.063	.156	*		.385				L3-31*

*Supplied Less Screw

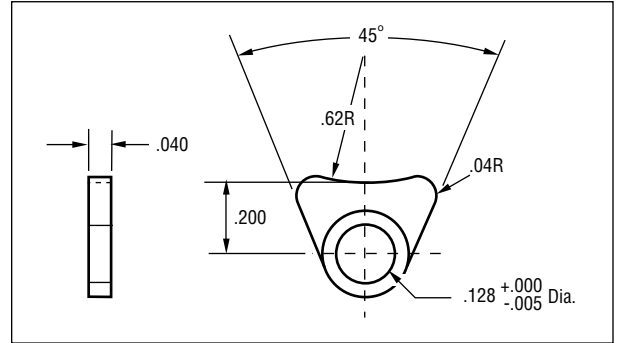
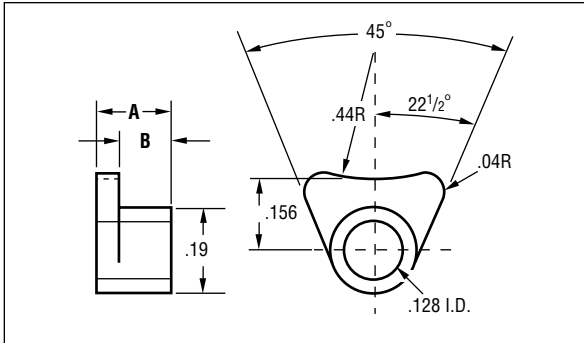
MOTOR MOUNT CLEATS



A	B	Order Screw Separately	C	Part No.
300 Series Stainless Steel				
.100	.052	Y1-4-T	.062	L2-1
.131	.081	Y1-4-U	.093	L2-2
.160	.109	Y1-4-U	.125	L2-3
.288	.238	Y1-4-W	.250	L2-4
.113	.063	Y1-4-U	.072	L2-5
.162	.112	Y1-4-U	.125	L2-6
.193	.143	Y1-4-V	.156	L2-7
.263	.213	Y1-4-W	.225	L2-8
400 Series Stainless Steel				
.100	.052	Y1-4-T	.062	L2-11
.131	.081	Y1-4-U	.093	L2-12
.160	.109	Y1-4-U	.125	L2-13
.162	.112	Y1-4-U	.125	L2-16
.193	.143	Y1-4-V	.156	L2-17
.263	.213	Y1-4-W	.225	L2-18

PRECISION SYNCHRO MOUNTING CLAMPS

Table of Pitch Diameters



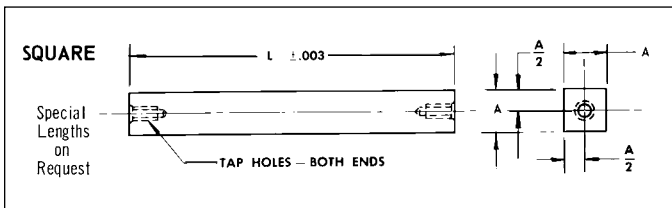
Material: 303 Stainless Steel
Aluminum — Anodized

Material: 302 Stainless Steel
Aluminum — Anodized

A ± .005	B ± .000 -.005	Part Number	
		Stainless Steel	Aluminum
.093	.047	L2-30	L2-33
.156	.110	L2-31	L2-34
.272	.210	L2-32	L2-35

A ± .005	B	Part Number	
		Stainless Steel	Aluminum
.040	.200	L2-36	L2-37

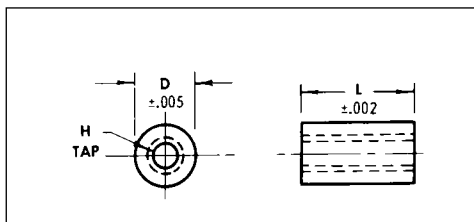
PRECISION SPACER POSTS



Material: 2024-T4 Aluminum (Chromic Acid Anodize)

A = 1/4" Square Stock			A = 5/16" Square Stock			A = 3/8" Square Stock		
L	Tap Hole	Part No.	L	Tap Hole	Part No.	L	Tap Hole	Part No.
1	#6-32 UNC-2B 1/4" Deep	F1-1	3/4	#6-32 UNC-2B 1/4" Deep	F3-10	1-1/2	#8-32 UNC-2B 5/16" Deep	F2-1
1-1/2		F1-2	1		F3-11	2		F2-2
2		F1-3	1-1/4		F3-12	2-1/2		F2-3
2-1/2		F1-4	1-1/2		F3-13	3		F2-4
3		F1-5	1-3/4		F3-14	3-1/2		F2-5
3-1/2		F1-6	2		F3-15	4		F2-6
4		F1-7	2-1/2		F3-16	4-1/2		F2-7
4-1/2		F1-8	3		F3-17	5		F2-8
5		F1-9	3-1/2		F3-18	5-1/2		F2-9

STAND-OFF THREADED TYPE



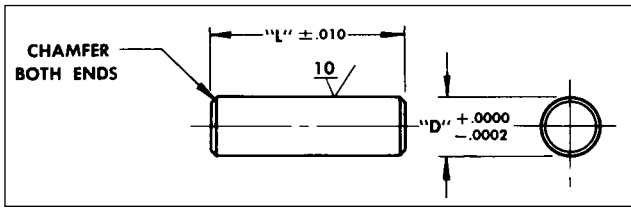
Material: 303 Stainless Steel

Minimum Thread Depth 3/8" from Each End.

H Tap	D	L	Part No.
#4-40	3/16	.250	EG-1
		.375	EG-2
		.500	EG-3
		.750	EG-13
#6-32	1/4	.375	EG-5
		.500	EG-6
#8-32	3/8	.375	EG-9
		.500	EG-10
		.625	EG-11
		.750	EG-12
		1.000	EG-15

PRECISION DOWEL PINS — SLIP FIT

1/32, 1/16, 5/64, 3/32, 1/8, 5/32, 3/16, 1/4, 5/16, 3/8 and 1/2 Inch Diameters



Material: 303 Stainless Steel

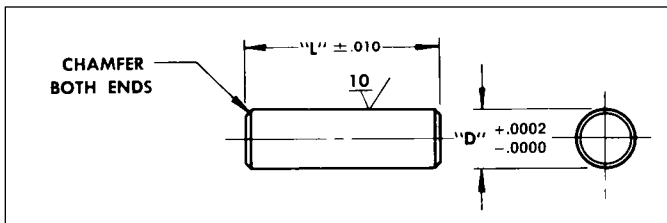
L	1/8 Dia. Pin D = .1251	5/32 Dia. Pin D = .1562	3/16 Dia. Pin D = .1875
	Part No.	Part No.	Part No.
1/8	D5-125	—	—
5/32	D5-156	—	—
3/16	D5-187	D8-187	—
7/32	D5-218	—	—
1/4	D5-250	D8-250	D9-250
5/16	D5-312	D8-312	D9-312
3/8	D5-375	D8-375	D9-375
7/16	D5-437	D8-437	D9-437
1/2	D5-500	D8-500	D9-500
5/8	D5-625	D8-625	D9-625
3/4	D5-750	—	D9-750
7/8	D5-875	—	D9-875
1	D5-1000	—	D9-1000
1-1/8	D5-1125	—	—

L	1/32 Dia. Pin D = .0313	1/16 Dia. Pin D = .0626	5/64 Dia. Pin D = .0781	3/32 Dia. Pin D = .0938
	Part No.	Part No.	Part No.	Part No.
3/32	D2-093	D3-093	—	D4-093
1/8	D2-125	D3-125	—	D4-125
5/32	D2-156	D3-156	D7-156	D4-156
3/16	D2-187	D3-187	D7-187	D4-187
7/32	D2-218	D3-218	—	D4-218
1/4	D2-250	D3-250	D7-250	D4-250
5/16	D2-312	D3-312	D7-312	D4-312
3/8	D2-375	D3-375	D7-375	D4-375
7/16	D2-437	D3-437	—	D4-437
1/2	D2-500	D3-500	—	D4-500
5/8	D2-625	D3-625	—	D4-625
3/4	D2-750	D3-750	—	D4-750
7/8	D2-875	D3-875	—	D4-875
1	D2-1000	D3-1000	—	D4-1000

L	1/4 Dia. Pin D = .2500	5/16 Dia. Pin D = .3125	3/8 Dia. Pin D = .3750	1/2 Dia. Pin D = .5000
	Part No.	Part No.	Part No.	Part No.
3/8	D11-375	—	—	—
7/16	D11-437	—	—	—
1/2	D11-500	D12-500	—	—
9/16	D11-562	—	D13-562	—
5/8	D11-625	—	—	—
3/4	D11-750	D12-750	D13-750	D14-750
7/8	D11-875	—	—	—
1	D11-1000	D12-1000	D13-1000	D14-1000
1-1/4	D11-1250	D12-1250	D13-1250	—
1-1/2	—	—	D13-1500	—

PRECISION DOWEL PINS — INTERFERENCE FIT

1/32, 1/16, 5/64, 3/32, 1/8, 5/32, 3/16, 1/4, 5/16, 3/8 and 1/2 Inch Diameters



Material: 303 Stainless Steel

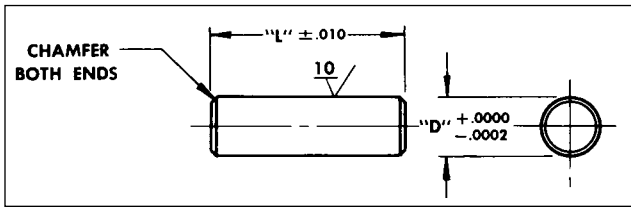
L	1/8 Dia. Pin D = .1251	5/32 Dia. Pin D = .1562	3/16 Dia. Pin D = .1875
	Part No.	Part No.	Part No.
1/8	D44-125	—	—
5/32	D44-156	—	—
3/16	D44-187	D45-187	—
7/32	D44-218	—	—
1/4	D44-250	D45-250	D46-250
5/16	D44-312	D45-312	D46-312
3/8	D44-375	D45-375	D46-375
7/16	D44-437	D45-437	D46-437
1/2	D44-500	D45-500	D46-500
5/8	D44-625	D45-625	D46-625
3/4	D44-750	—	D46-750
7/8	D44-875	—	D46-875
1	D44-1000	—	D46-1000
1-1/8	D44-1125	—	—

L	1/32 Dia. Pin D = .0313	1/16 Dia. Pin D = .0626	5/64 Dia. Pin D = .0781	3/32 Dia. Pin D = .0938
	Part No.	Part No.	Part No.	Part No.
3/32	D40-093	D41-093	—	D43-093
1/8	D40-125	D41-125	—	D43-125
5/32	D40-156	D41-156	D42-156	D43-156
3/16	D40-187	D41-187	D42-187	D43-187
7/32	D40-218	D41-218	—	D43-218
1/4	D40-250	D41-250	D42-250	D43-250
5/16	D40-312	D41-312	D42-312	D43-312
3/8	D40-375	D41-375	D42-375	D43-375
7/16	D40-437	D41-437	—	D43-437
1/2	D40-500	D41-500	—	D43-500
5/8	D40-625	D41-625	—	D43-625
3/4	D40-750	D41-750	—	D43-750
7/8	D40-875	D41-875	—	D43-875
1	D40-1000	D41-1000	—	D43-1000

L	1/4 Dia. Pin D = .2500	5/16 Dia. Pin D = .3125	3/8 Dia. Pin D = .3750	1/2 Dia. Pin D = .5000
	Part No.	Part No.	Part No.	Part No.
3/8	D47-375	—	—	—
7/16	D47-437	—	—	—
1/2	D47-500	D48-500	—	—
9/16	D47-562	—	D49-562	—
5/8	D47-625	—	—	—
3/4	D47-750	D48-750	D49-750	D50-750
7/8	D47-875	—	—	—
1	D47-1000	D48-1000	D49-1000	D50-1000
1-1/4	D47-1250	D48-1250	D49-1250	—
1-1/2	—	—	D49-1500	—

PRECISION DOWEL PINS — SLIP FIT

1/32, 1/16, 5/64, 3/32, 1/8, 5/32, 3/16, 1/4, 5/16, 3/8 and 1/2 Inch Diameters



Material: 303 Stainless Steel

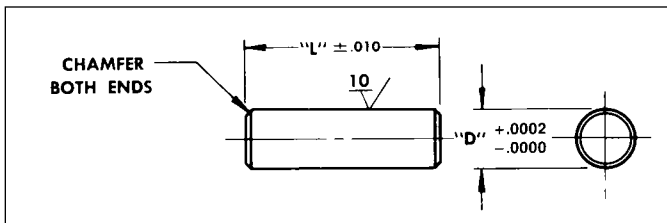
L	1/8 Dia. Pin D = .1251	5/32 Dia. Pin D = .1562	3/16 Dia. Pin D = .1875
	Part No.	Part No.	Part No.
1/8	D5-125	—	—
5/32	D5-156	—	—
3/16	D5-187	D8-187	—
7/32	D5-218	—	—
1/4	D5-250	D8-250	D9-250
5/16	D5-312	D8-312	D9-312
3/8	D5-375	D8-375	D9-375
7/16	D5-437	D8-437	D9-437
1/2	D5-500	D8-500	D9-500
5/8	D5-625	D8-625	D9-625
3/4	D5-750	—	D9-750
7/8	D5-875	—	D9-875
1	D5-1000	—	D9-1000
1-1/8	D5-1125	—	—

L	1/32 Dia. Pin D = .0313	1/16 Dia. Pin D = .0626	5/64 Dia. Pin D = .0781	3/32 Dia. Pin D = .0938
	Part No.	Part No.	Part No.	Part No.
3/32	D2-093	D3-093	—	D4-093
1/8	D2-125	D3-125	—	D4-125
5/32	D2-156	D3-156	D7-156	D4-156
3/16	D2-187	D3-187	D7-187	D4-187
7/32	D2-218	D3-218	—	D4-218
1/4	D2-250	D3-250	D7-250	D4-250
5/16	D2-312	D3-312	D7-312	D4-312
3/8	D2-375	D3-375	D7-375	D4-375
7/16	D2-437	D3-437	—	D4-437
1/2	D2-500	D3-500	—	D4-500
5/8	D2-625	D3-625	—	D4-625
3/4	D2-750	D3-750	—	D4-750
7/8	D2-875	D3-875	—	D4-875
1	D2-1000	D3-1000	—	D4-1000

L	1/4 Dia. Pin D = .2500	5/16 Dia. Pin D = .3125	3/8 Dia. Pin D = .3750	1/2 Dia. Pin D = .5000
	Part No.	Part No.	Part No.	Part No.
3/8	D11-375	—	—	—
7/16	D11-437	—	—	—
1/2	D11-500	D12-500	—	—
9/16	D11-562	—	D13-562	—
5/8	D11-625	—	—	—
3/4	D11-750	D12-750	D13-750	D14-750
7/8	D11-875	—	—	—
1	D11-1000	D12-1000	D13-1000	D14-1000
1-1/4	D11-1250	D12-1250	D13-1250	—
1-1/2	—	—	D13-1500	—

PRECISION DOWEL PINS — INTERFERENCE FIT

1/32, 1/16, 5/64, 3/32, 1/8, 5/32, 3/16, 1/4, 5/16, 3/8 and 1/2 Inch Diameters



Material: 303 Stainless Steel

L	1/8 Dia. Pin D = .1251	5/32 Dia. Pin D = .1562	3/16 Dia. Pin D = .1875
	Part No.	Part No.	Part No.
1/8	D44-125	—	—
5/32	D44-156	—	—
3/16	D44-187	D45-187	—
7/32	D44-218	—	—
1/4	D44-250	D45-250	D46-250
5/16	D44-312	D45-312	D46-312
3/8	D44-375	D45-375	D46-375
7/16	D44-437	D45-437	D46-437
1/2	D44-500	D45-500	D46-500
5/8	D44-625	D45-625	D46-625
3/4	D44-750	—	D46-750
7/8	D44-875	—	D46-875
1	D44-1000	—	D46-1000
1-1/8	D44-1125	—	—

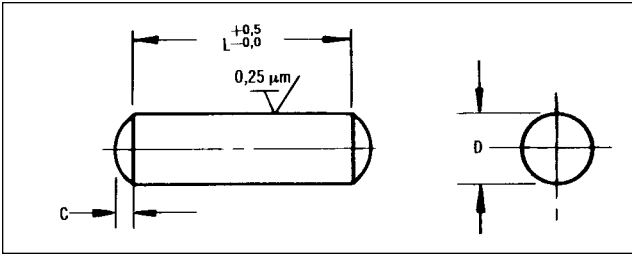
L	1/32 Dia. Pin D = .0313	1/16 Dia. Pin D = .0626	5/64 Dia. Pin D = .0781	3/32 Dia. Pin D = .0938
	Part No.	Part No.	Part No.	Part No.
3/32	D40-093	D41-093	—	D43-093
1/8	D40-125	D41-125	—	D43-125
5/32	D40-156	D41-156	D42-156	D43-156
3/16	D40-187	D41-187	D42-187	D43-187
7/32	D40-218	D41-218	—	D43-218
1/4	D40-250	D41-250	D42-250	D43-250
5/16	D40-312	D41-312	D42-312	D43-312
3/8	D40-375	D41-375	D42-375	D43-375
7/16	D40-437	D41-437	—	D43-437
1/2	D40-500	D41-500	—	D43-500
5/8	D40-625	D41-625	—	D43-625
3/4	D40-750	D41-750	—	D43-750
7/8	D40-875	D41-875	—	D43-875
1	D40-1000	D41-1000	—	D43-1000

L	1/4 Dia. Pin D = .2500	5/16 Dia. Pin D = .3125	3/8 Dia. Pin D = .3750	1/2 Dia. Pin D = .5000
	Part No.	Part No.	Part No.	Part No.
3/8	D47-375	—	—	—
7/16	D47-437	—	—	—
1/2	D47-500	D48-500	—	—
9/16	D47-562	—	D49-562	—
5/8	D47-625	—	—	—
3/4	D47-750	D48-750	D49-750	D50-750
7/8	D47-875	—	—	—
1	D47-1000	D48-1000	D49-1000	D50-1000
1-1/4	D47-1250	D48-1250	D49-1250	—
1-1/2	—	—	D49-1500	—

METRIC PRECISION DOWEL PINS — PRESS FIT

All Dimensions In Millimeters

1, 1.5, 2, 2.5, 3, 4, 5, 6, 8, 10, 12 mm Diameters



Material: 300 Series Stainless Steel,
Ground Finish

L	D=1 $+0.009$ $+0.002$ C=0.15	D=1.5 $+0.009$ $+0.002$ C=0.23	D=2 $+0.009$ $+0.002$ C=0.3	D=2.5 $+0.009$ $+0.002$ C=0.4
	Part No.	Part No.	Part No.	Part No.
3	MDP1-1	—	—	—
4	MDP1-2	MDP2-2	MDP3-2	MDP4-2
5	MDP1-3	MDP2-3	MDP3-3	MDP4-3
6	MDP1-4	MDP2-4	MDP3-4	MDP4-4
8	MDP1-5	MDP2-5	MDP3-5	MDP4-5
10	MDP1-6	MDP2-6	MDP3-6	MDP4-6
12	MDP1-7	MDP2-7	MDP3-7	MDP4-7
14	—	MDP2-8	MDP3-8	MDP4-8
16	—	MDP2-9	MDP3-9	MDP4-9
18	—	—	MDP3-10	MDP4-10
20	—	—	MDP3-11	MDP4-11
24	—	—	—	MDP4-12

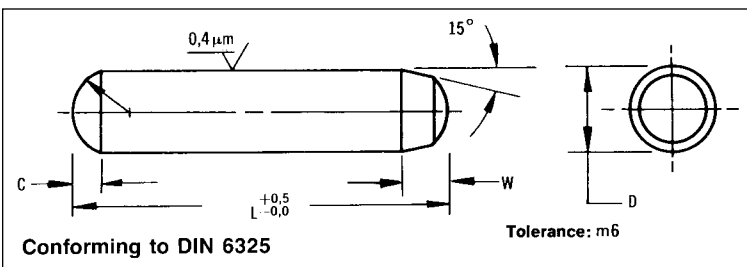
L	D=3 $+0.012$ $+0.004$ C=0.45	D=4 $+0.012$ $+0.004$ C=0.6	D=5 $+0.012$ $+0.004$ C=0.75	D=6 $+0.015$ $+0.006$ C=0.9
	Part No.	Part No.	Part No.	Part No.
4	MDP5-1	—	—	—
5	MDP5-2	MDP6-2	MDP7-2	—
6	MDP5-3	MDP6-3	MDP7-3	MDP8-3
8	MDP5-4	MDP6-4	MDP7-4	MDP8-4
10	MDP5-5	MDP6-5	MDP7-5	MDP8-5
12	MDP5-6	MDP6-6	MDP7-6	MDP8-6
14	MDP5-7	MDP6-7	MDP7-7	MDP8-7
16	MDP5-8	MDP6-8	MDP7-8	MDP8-8
18	MDP5-9	MDP6-9	MDP7-9	MDP8-9
20	MDP5-10	MDP6-10	MDP7-10	MDP8-10
24	MDP5-11	MDP6-11	MDP7-11	MDP8-11
28	MDP5-12	MDP6-12	MDP7-12	MDP8-12

L	D=8 $+0.015$ $+0.006$ C=1.2	D=10 $+0.015$ $+0.006$ C=1.5	D=12 $+0.018$ $+0.007$ C=1.8
	Part No.	Part No.	Part No.
12	MDP9-2	—	—
14	MDP9-3	MDP10-3	—
16	MDP9-4	MDP10-4	—
18	MDP9-5	MDP10-5	MDP11-5
20	MDP9-6	MDP10-6	MDP11-6
24	MDP9-7	MDP10-7	MDP11-7
28	MDP9-8	MDP10-8	MDP11-8
32	MDP9-9	MDP10-9	MDP11-9
36	—	MDP10-10	MDP11-10
40	—	MDP10-11	MDP11-11
50	—	—	MDP11-12

METRIC HARDENED DOWEL PINS — PRESS FIT

All Dimensions In Millimeters

2, 2.5, 3, 4, 5, 6, 8, 10 mm Diameters



Material: 416 Stainless Steel
Hardened to: 36-42 Rockwell C

L	D=2 $+0.009$ $+0.002$ W=0.78 C=0.3	D=2.5 $+0.009$ $+0.002$ W=0.95 C=0.4	D=3 $+0.012$ $+0.004$ W=1.1 C=0.45	D=4 $+0.012$ $+0.004$ W=1.4 C=0.6
	Part No.	Part No.	Part No.	Part No.
5	MDP13-1	MDP14-1	—	—
6	MDP13-2	MDP14-2	—	—
8	MDP13-3	MDP14-3	MDP15-2	—
10	MDP13-4	MDP14-4	MDP15-3	—
12	MDP13-5	MDP14-5	MDP15-4	MDP16-4
14	MDP13-6	MDP14-6	MDP15-5	MDP16-5
16	MDP13-7	MDP14-7	MDP15-6	MDP16-6
20	MDP13-8	MDP14-8	MDP15-7	MDP16-7
24	MDP13-9	MDP14-9	MDP15-8	MDP16-8
			MDP15-9	MDP16-9

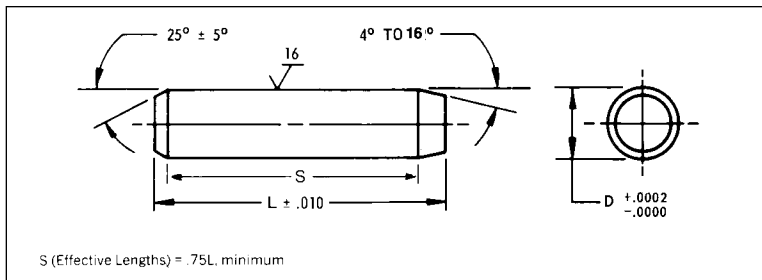
L	D=5 $+0.012$ $+0.004$ W=1.7 C=0.75	D=6 $+0.015$ $+0.006$ W=2.1 C=0.9	D=8 $+0.015$ $+0.006$ W=2.6 C=1.2	D=10 $+0.018$ $+0.007$ W=3.0 C=1.5
	Part No.	Part No.	Part No.	Part No.
10	MDP17-1	—	—	—
12	MDP17-2	MDP18-2	—	—
16	MDP17-3	MDP18-3	MDP19-3	—
20	MDP17-4	MDP18-4	MDP19-4	MDP20-4
24	MDP17-5	MDP18-5	MDP19-5	MDP20-5
30	MDP17-6	MDP18-6	MDP19-6	MDP20-6
40	—	MDP18-7	MDP19-7	MDP20-7

METRIC DOWEL PIN KIT

Description of Contents	Number of Parts	Part No.
Dowel Pins, hardened stainless steel. Eight diameters (2 to 10) with assorted lengths (5 to 24).	140	MAK9

DOWEL PINS — HARDENED - PRESS FIT

1/16, 3/32, 1/8, 5/32, 3/16, 1/4, 5/16 and 3/8 Inch Diameters



Material: Conforms To Specification
MS-16555, 416 Stainless Steel

Finish: Clear Passivate

Hardened To: 36-42 Rockwell C

*Pins not to MS lengths

Sold In Increments of 10 pieces.

Note: For those applications allowing a wider hardness range (33-45 Rockwell C) PIC has available a lower cost version — Just use a suffix-P on the part number.

Example: D15-500-P

L	1/16 Dia. Pin D = .0626 Part No.	3/32 Dia. Pin D = .0939 Part No.	1/8 Dia. Pin D = .1251 Part No.	5/32 Dia. Pin D = .1563 Part No.
3/16	D15-187	*D16-187	—	—
1/4	D15-250	*D16-250	*D17-250	—
5/16	D15-312	D16-312	*D17-312	—
3/8	D15-375	D16-375	D17-375	*D18-375
7/16	D15-437	D16-437	D17-437	*D18-437
1/2	D15-500	D16-500	D17-500	D18-500
5/8	D15-625	D16-625	D17-625	D18-625
3/4	D15-750	D16-750	D17-750	D18-750
7/8	*D15-875	D16-875	D17-875	D18-875
1	D15-1000	D16-1000	D17-1000	D18-1000

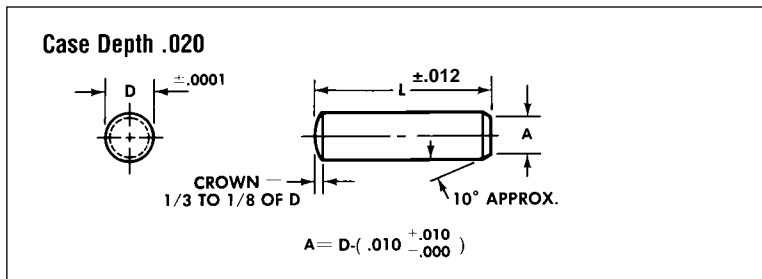
L	3/16 Dia. Pin D = .1876 Part No.	1/4 Dia. Pin D = .2501 Part No.	5/16 Dia. Pin D = .3126 Part No.	3/8 Dia. Pin D = .3751 Part No.
3/8	*D19-375	—	—	—
1/2	*D19-500	*D20-500	—	—
5/8	D19-625	*D20-625	—	—
3/4	D19-750	D20-750	*D21-750	*D22-750
1	D19-1000	D20-1000	D21-1000	*D22-1000
1-1/4	D19-1250	D20-1250	D21-1250	D22-1250
1-1/2	—	D20-1500	D21-1500	D22-1500

DOWEL PINS KIT

Description of Contents	Number of Parts	Part No.
Dowel Pins—Hardened Stainless Steel Meet MS Spec. Eight Diameters (1/16 to 3/8) with Assorted Lengths (1/4" to 1-1/2")	140	Y10K

DOWEL PINS — HARDENED AND GROUND - PRESS FIT

1/16, 3/32, 1/8, 3/16, 1/4, 5/16 and 3/8 Inch Diameters



Material: Carbon Steel
Carburized, RC60

L	1/16 Dia. Pin D = .0627 Part No.	3/32 Dia. Pin D = .0940 Part No.	1/8 Dia. Pin D = .1252 Part No.
3/16	D25-187	—	—
1/4	D25-250	D26-250	D27-250
3/8	D25-375	D26-375	D27-375
1/2	D25-500	D26-500	D27-500
5/8	D25-625	D26-625	D27-625
3/4	D25-750	D26-750	D27-750
1	D25-1000	D26-1000	D27-1000
1-1/4	—	—	D27-1250
1-1/2	—	—	D27-1500

L	3/16 Dia. Pin D = .1877 Part No.	1/4 Dia. Pin D = .2502 Part No.	5/16 Dia. Pin D = .3127 Part No.	3/8 Dia. Pin D = .3752 Part No.
1/2	D29-500	D30-500	D31-500	D32-500
3/4	D29-750	D30-750	D31-750	D32-750
1	D29-1000	D30-1000	D31-1000	D32-1000
1-1/4	D29-1250	D30-1250	D31-1250	D32-1250
1-1/2	D29-1500	D30-1500	D31-1500	D32-1500

REAMERS — TAPER & DOWEL PIN

Dowel Pin Reamer - Straight



Material: High Speed Steel

Pin Size	Dia.	Part No.
1/32	.0312	BE-7
1/16	.0625	BE-8
3/32	.0937	BE-9
1/8	.1250	BE-10
3/16	.1875	BE-61
1/4	.2500	BE-62

Taper Pin Reamer - Spiral



Material: High Speed Steel

Pin Size	Part No.
8/0	BE-4
7/0	BE-5
6/0	BE-56
5/0	BE-6
3/0	BE-58

METRIC REAMERS — TAPER & DOWEL PIN

All Dimensions In Millimeters

Dowel Pin Reamer - Straight



Material: High Speed Steel

Dowel Pin Reamers*

Pin Size	Part No.
1.5	MDR1-1
2.0	MDR1-2
2.5	MDR1-3
3.0	MDR1-4
4.0	MDR1-5
5.0	MDR1-6
6.0	MDR1-7
8.0	MDR1-8
10.0	MDR1-9
12.0	MDR1-10

*Reamer Diameter
Accuracy H7

Taper Pin Reamer - Spiral



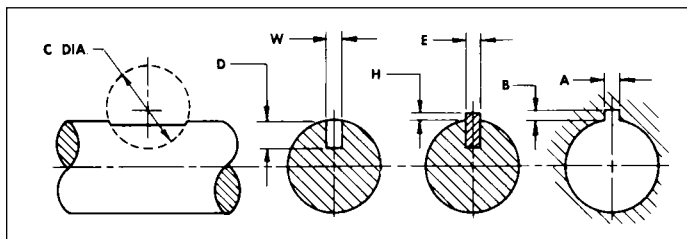
Material: High Speed Steel

Taper Pin Reamers*

Pin Size	Part No.
1.0	MTR1-1
1.5	MTR1-2
2.0	MTR1-3
3.0	MTR1-4
4.0	MTR1-5

*Taper 1:50

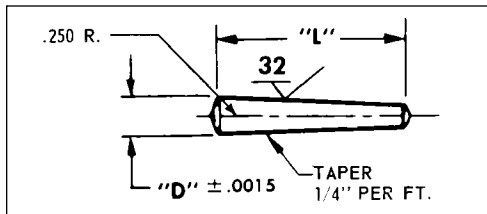
WOODRUFF KEYS



Material: 300 Series Stainless Steel

Key Size	A +.002	B +.005	C +.018	D +.005	W +.0015	H +.010	E +.001	Part No.
1/16 x 1/4	.0635	.0372	.240	.0728	.0615	.0262	.0625	CR-201
3/32 x 5/16	.0948	.0529	.312	.0882	.0928	.0419	.0938	CR-207
1/16 x 3/8	.0635	.0372	.375	.1358	.0615	.0262	.0625	CR-211
3/32 x 3/8	.0948	.0529	.375	.1202	.0928	.0419	.0938	CR-212
1/8 x 3/8	.1260	.0685	.375	.1045	.1240	.0575	.1250	CR-213
1/16 x 1/2	.0635	.0372	.500	.1668	.0615	.0262	.0625	CR-1
1/8 x 1/2	.1260	.0685	.500	.1355	.1240	.0575	.1250	CR-3
1/8 x 5/8	.1260	.0685	.625	.1825	.1240	.0575	.1250	CR-5

TAPER PINS INCH



Material: 303 Stainless Steel

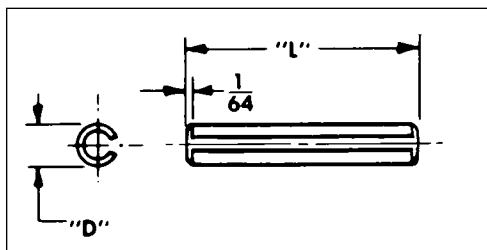
Shaft Size	Pin Size	L	D	Part No.
3/32	9/0	1/4	.031	C2-9
1/8	8/0	3/8	.0470	C2-1
		1/2		C2-2
3/16	7/0	3/8	.0625	C2-6
		7/16		C2-3
		1/2		C2-4
		5/8		C2-8
1/4	6/0	7/16	.078	C2-13
		1/2		C2-14
		9/16		C2-17
		3/4		C2-19

Shaft Size	Pin Size	L	D	Part No.
1/4 & 5/16	5/0	1/2	.094	C2-20
		9/16		C2-5
		5/8		C2-21
		3/4		C2-22
3/8	3/0	7/8	.125	C2-23
		1		C2-29
				C2-31

TAPER, SPRING & DOWEL PIN KITS

Description of Contents	Number of Parts	Part No.
Stainless Steel Taper Pins, Spring Pins, and Dowel Pins. Assorted Sizes from .047 to .125.	540	Y4K
Taper Pins-Stainless Steel. Eight pin sizes (9/0 to 2/0) in Assorted Lengths (1/4" to 1-1/4").	250	Y12K

SPRING PINS INCH & METRIC

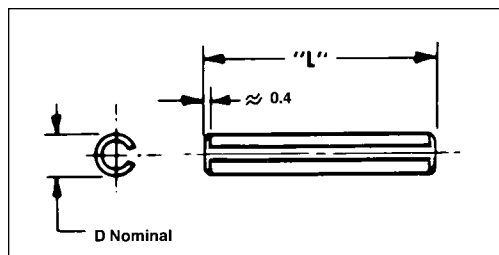


Material: Hardened 420 Stainless Steel

Shaft Size	L	D +.004 -.000	Drill Size	Part No.
3/16	1/4	.066	.062	C3-4
	5/16			C3-6
	3/8			C3-5
	7/16			C3-1
	1/2			C3-2
	9/16			C3-7
	5/8			C3-8
1/4	3/8	.099	.094	C3-9
	7/16			C3-10

Shaft Size	L	D +.004 -.000	Drill Size	Part No.
1/4	1/2	.099	.094	C3-11
	9/16			C3-3
	5/8			C3-12
3/8	3/8	.131	.125	C3-13
	7/16			C3-14
	5/8			C3-17
	3/4			C3-19

All Dimensions In Millimeters



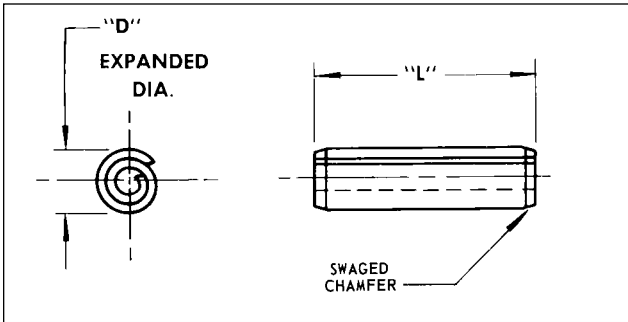
Material: Hardened Stainless Steel

Shaft Size	L	D	Drill Size	Part No.
4 & 5	6	1.7	1.5	MRP1-1
	8			MRP1-2
	10			MRP1-3
	12			MRP1-4
	14			MRP1-5
6	16	2.3	2	MRP1-6
	10			MRP1-7
	12			MRP1-8
8 & 10	14	3.3	3	MRP1-9
	16			MRP1-10
	18			MRP1-11
	20			MRP1-12

Shaft Size	L	D	Drill Size	Part No.
8 & 10	10	3.3	3	MRP1-12
	12			MRP1-13
	14			MRP1-14
	16			MRP1-15
	18			MRP1-16
20	18	3	3	MRP1-17
	20			MRP1-17

SPIROL PINS

Standard Duty



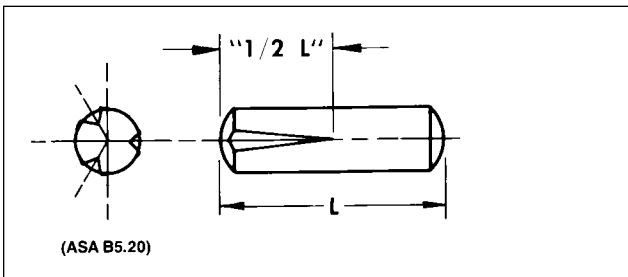
Material: 302 Stainless Steel

Shaft Size	Drill Size	L	D	Part No.
3/32	.031 +.001 -.000	1/8	.033 +.002 -.000	C5-7
		3/16		C5-8
		1/4		C5-9
		5/16		C5-10
		3/8		C5-11
1/8	.039 +.001 -.000	3/16	.041 +.003 -.000	C5-12
		1/4		C5-13
		5/16		C5-14
		3/8		C5-1
		7/16		C5-15
1/8	.047 ±.001	3/16	.049 +.003 -.000	C5-16
		1/4		C5-17
		5/16		C5-18
		3/8		C5-19

Shaft Size	Drill Size	L	D	Part No.
3/16	.062 +.003 -.001	1/4	.067 +.005 -.000	C5-28
		5/16		C5-29
		3/8		C5-3
		7/16		C5-30
		1/2		C5-4
		9/16		C5-31
3/8	.125 +.004 -.001	3/8	.131 +.007 -.000	C5-37
		1/2		C5-39
		5/8		C5-41
		3/4		C5-43

GROOVE PINS

Type 2 ■ Expanded Diameter



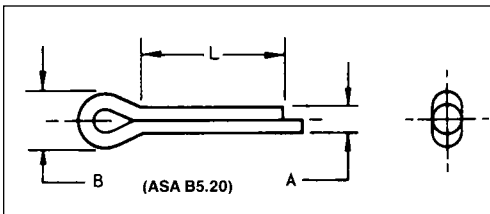
Material: 303 Stainless Steel

Shaft Size	Drill Size	L	Part No.
1/8	.047	3/8	C4-1
		1/2	C4-2
3/16	.062	3/8	C4-3
		1/2	C4-4
1/4	.094	3/8	C4-5

Shaft Size	Drill Size	L	Part No.
1/4	.094	1/2	C4-6
		3/4	C4-13
3/8	.125	1/2	C4-14
		1	C4-17

COTTER PINS

Extended Square End



Material: 302 Stainless Steel

A	B Min.	L	Hole Size	Part No.
.030	1/16	3/8	3/64	C6-1
		1/2		C6-2
		3/4		C6-3
		1		C6-4
.058	1/8	3/8	5/64	C6-5
		1/2		C6-6
		3/4		C6-7
.088	3/16	3/4	7/64	C6-11
		1		C6-12
.118	1/4	1	9/64	C6-16

COTTER PINS KIT

Description of Contents	Number of Parts	Part No.
Cotter Pins-Stainless Steel. Four Diameter sizes in Assorted Lengths (3/8" to 1").	300	Y11K