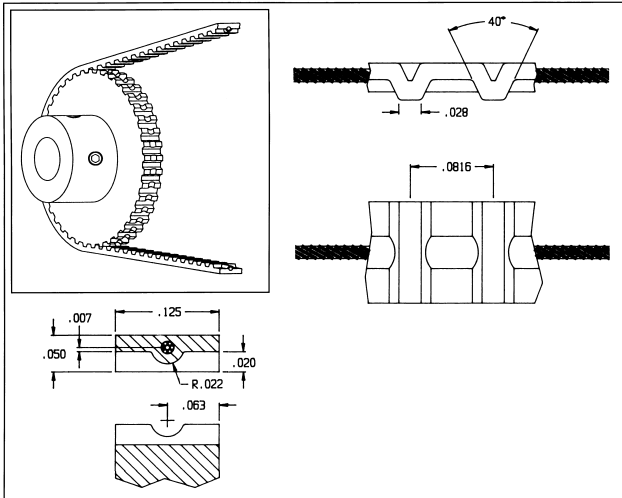


NO-SLIDE TIMING BELTS

40 DP (.0816 Pitch), 1/8" Wide — Polyurethane Belt



Material: Molded Polyurethane with .018" Dia. Stainless Steel Core

Color: Clear with Black Core

Maximum Tensile Strength: 25 Lbs.

Note: For maximum life use working tension of less than 4 lbs.

| No Of Grooves | Length (Ref.) | Part Number | No Of Grooves | Length (Ref.) | Part Number |
|---------------|---------------|-------------|---------------|---------------|-------------|
| 24* | 1.9584 | F8BS-24 | 114 | 9.3024 | F8BS-114 |
| 44 | 3.5904 | F8BS-44 | 120 | 9.7920 | F8BS-120 |
| 45 | 3.6720 | F8BS-45 | 123 | 10.0368 | F8BS-123 |
| 48 | 3.9168 | F8BS-48 | 126 | 10.2816 | F8BS-126 |
| 51 | 4.1616 | F8BS-51 | 132 | 10.7721 | F8BS-132 |
| 52 | 4.2432 | F8BS-52 | 139 | 11.3424 | F8BS-139 |
| 53 | 4.3248 | F8BS-53 | 140 | 11.4240 | F8BS-140 |
| 60 | 4.8960 | F8BS-60 | 150 | 12.2400 | F8BS-150 |
| 64 | 5.2224 | F8BS-64 | 162 | 13.2192 | F8BS-162 |
| 66 | 5.3856 | F8BS-66 | 175 | 14.2800 | F8BS-175 |
| 67 | 5.4672 | F8BS-67 | 184 | 15.0144 | F8BS-184 |
| 72 | 5.8752 | F8BS-72 | 193 | 15.7488 | F8BS-193 |
| 77 | 6.2832 | F8BS-77 | 214 | 17.4624 | F8BS-214 |
| 88 | 7.1808 | F8BS-88 | 228 | 18.6048 | F8BS-228 |
| 96 | 7.8336 | F8BS-96 | 245 | 19.9920 | F8BS-245 |
| 98 | 7.9968 | F8BS-98 | 249 | 20.3184 | F8BS-249 |
| 102 | 8.3232 | F8BS-102 | 251 | 20.4816 | F8BS-251 |
| 109 | 8.8944 | F8BS-109 | 264 | 21.5424 | F8BS-264 |
| 110 | 8.9760 | F8BS-110 | | | |

* Splice not overmolded on 24 grooves

For other length belts longer than the minimum listed, substitute the desired number of drive pins at the end of the part number.

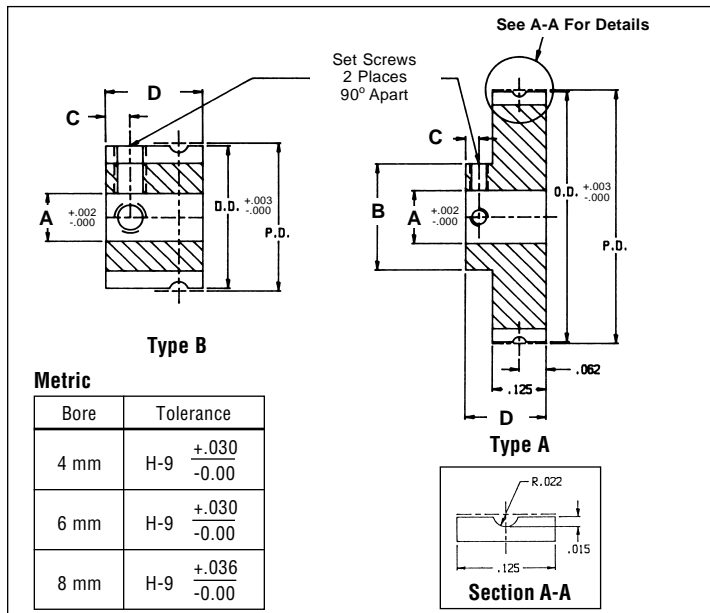
Bulk Lengths — Not Spliced

| Length | Part Number |
|--------|-------------|
| 5 Ft | F8BS-5FT |
| 10 Ft | F8BS-10FT |
| 25 Ft | F8BS-25FT |
| 50 Ft | F8BS-50FT |
| 100 Ft | F8BS-100FT |

For field splicing use kit F8B-SK. See page 5-5.

NO-SLIDE TIMING PULLEYS

40 D.P. (.0816 Pitch), No Flange, Grooved Pulley for 1/8" Wide Belts



Material: 2024-T4 Aluminum (anodized before cutting)

Note 1: For metric bores prefix part numbers with letter M. XX = number of teeth

4 mm bore part number: MF8P4-XX

6 mm bore part number: MF8P6-XX

8 mm bore part number: MF8P8-XX

Example: Part number for a 6 mm bore with 40 teeth is MF8P6-40

Note 2: Other number of teeth available for inch and metric pulleys

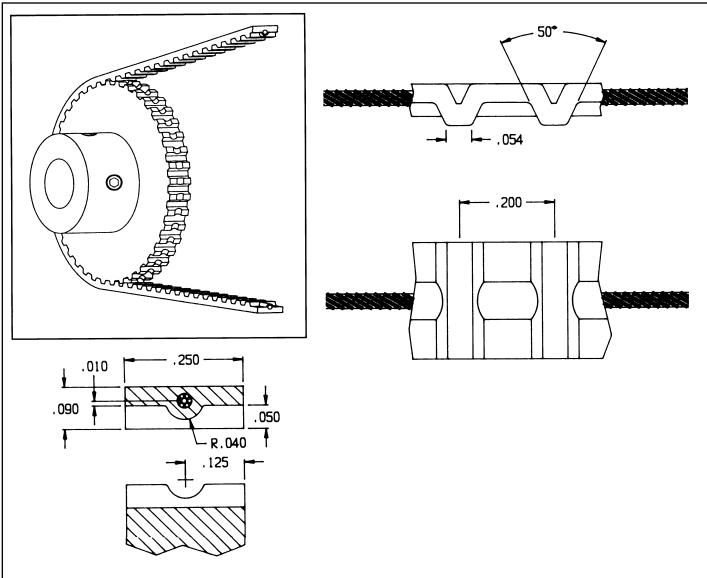
| No. of Teeth | Type | Pitch Dia. | Outside Dia. | Bore Size / Part Number | | |
|--------------|------|------------|--------------|-------------------------|----------|----------|
| | | | | .125 | .187 | .250 |
| 14* | B | .3636 | .349 | F8P2-14 | F8P3-14 | — |
| 15* | B | .3896 | .375 | F8P2-15 | F8P3-15 | — |
| 18* | B | .4675 | .453 | F8P2-18 | F8P3-18 | F8P4-18 |
| 20 | A | .5195 | .505 | F8P2-20 | F8P3-20 | F8P4-20 |
| 24 | A | .6234 | .609 | F8P2-24 | F8P3-24 | F8P4-24 |
| 25 | A | .6494 | .635 | F8P2-25 | F8P3-25 | F8P4-25 |
| 28 | A | .7273 | .713 | F8P2-28 | F8P3-28 | F8P4-28 |
| 30 | A | .7792 | .765 | F8P2-30 | F8P3-30 | F8P4-30 |
| 32 | A | .8312 | .817 | F8P2-32 | F8P3-32 | F8P4-32 |
| 34 | A | .8831 | .869 | F8P2-34 | F8P3-34 | F8P4-34 |
| 36 | A | .9351 | .921 | F8P2-36 | F8P3-36 | F8P4-36 |
| 38 | A | .9870 | .973 | F8P2-38 | F8P3-38 | F8P4-38 |
| 40 | A | 1.0390 | 1.025 | F8P2-40 | F8P3-40 | F8P4-40 |
| 42 | A | 1.0909 | 1.076 | F8P2-42 | F8P3-42 | F8P4-42 |
| 44 | A | 1.1429 | 1.128 | F8P2-44 | F8P3-44 | F8P4-44 |
| 48 | A | 1.2468 | 1.232 | F8P2-48 | F8P3-48 | F8P4-48 |
| 50 | A | 1.2987 | 1.284 | F8P2-50 | F8P3-50 | F8P4-50 |
| 54 | A | 1.4026 | 1.388 | F8P2-54 | F8P3-54 | F8P4-54 |
| 60 | A | 1.5584 | 1.544 | F8P2-60 | F8P3-60 | F8P4-60 |
| 72 | A | 1.8701 | 1.856 | F8P2-72 | F8P3-72 | F8P4-72 |
| 75 | A | 1.9481 | 1.934 | F8P2-75 | F8P3-75 | F8P4-75 |
| 80 | A | 2.0779 | 2.063 | F8P2-80 | F8P3-80 | F8P4-80 |
| 84 | A | 2.1818 | 2.167 | F8P2-84 | F8P3-84 | F8P4-84 |
| 88 | A | 2.2857 | 2.271 | F8P2-88 | F8P3-88 | F8P4-88 |
| 90 | A | 2.3377 | 2.323 | F8P2-90 | F8P3-90 | F8P4-90 |
| 96 | A | 2.4935 | 2.479 | F8P2-96 | F8P3-96 | F8P4-96 |
| 98 | A | 2.5455 | 2.531 | F8P2-98 | F8P3-98 | F8P4-98 |
| 100 | A | 2.5974 | 2.583 | F8P2-100 | F8P3-100 | F8P4-100 |
| 120 | A | 3.1169 | 3.102 | F8P2-120 | F8P3-120 | F8P4-120 |

* Recommended for use as an idler only

| Dimen. (In.) | Bore Size | | | | | |
|--------------|-----------|-------|-------|-------|-------|-------|
| | 1/8" | 3/16" | 1/4" | 4 mm | 6 mm | 8 mm |
| A | .1248 | .1873 | .2498 | .1573 | .2360 | .3148 |
| B | .312 | .375 | .500 | .312 | .375 | .500 |
| C | .09 | .11 | .12 | .09 | .11 | .12 |
| D | .312 | .343 | .375 | .312 | .343 | .375 |
| Set Screw | #2-56 | #4-40 | #6-32 | M2X.4 | M3X.5 | M4X.7 |

NO-SLIDE TIMING BELTS

1/5 (.200) Pitch, 1/4" Wide Polyurethane Belts



| No Of Grooves | Length (Ref.) | Part Number | No Of Grooves | Length (Ref.) | Part Number |
|---------------|---------------|-------------|---------------|---------------|-------------|
| 10* | 2.00 | F20BS-10 | 110 | 22.00 | F20BS-110 |
| 15* | 3.00 | F20BS-15 | 115 | 23.00 | F20BS-115 |
| 20* | 4.00 | F20BS-20 | 120 | 24.00 | F20BS-120 |
| 25* | 5.00 | F20BS-25 | 125 | 25.00 | F20BS-125 |
| 30* | 6.00 | F20BS-30 | 130 | 26.00 | F20BS-130 |
| 35 | 7.00 | F20BS-35 | 135 | 27.00 | F20BS-135 |
| 40 | 8.00 | F20BS-40 | 140 | 28.00 | F20BS-140 |
| 45 | 9.00 | F20BS-45 | 145 | 29.00 | F20BS-145 |
| 50 | 10.00 | F20BS-50 | 150 | 30.00 | F20BS-150 |
| 55 | 11.00 | F20BS-55 | 155 | 31.00 | F20BS-155 |
| 60 | 12.00 | F20BS-60 | 160 | 32.00 | F20BS-160 |
| 65 | 13.00 | F20BS-65 | 165 | 33.00 | F20BS-165 |
| 70 | 14.00 | F20BS-70 | 170 | 34.00 | F20BS-170 |
| 75 | 15.00 | F20BS-75 | 175 | 35.00 | F20BS-175 |
| 80 | 16.00 | F20BS-80 | 180 | 36.00 | F20BS-180 |
| 85 | 17.00 | F20BS-85 | 185 | 37.00 | F20BS-185 |
| 90 | 18.00 | F20BS-90 | 190 | 38.00 | F20BS-190 |
| 95 | 19.00 | F20BS-95 | 195 | 39.00 | F20BS-195 |
| 100 | 20.00 | F20BS-100 | 200 | 40.00 | F20BS-200 |
| 105 | 21.00 | F20BS-105 | 210 | 42.00 | F20BS-210 |

* Splice not overmolded on less than 35 grooves

For other length belts longer than the minimum listed, substitute the desired number of drive pins at the end of the part number.

Note: For Aramid (Kevlar) fiber core, change Part No. to F20BA-□□□
Consult factory for availability

Bulk Lengths — Not Spliced

| Length | Part Number |
|--------|-------------|
| 5 Ft | F20BS-5FT |
| 10 Ft | F20BS-10FT |
| 25 Ft | F20BS-25FT |
| 50 Ft | F20BS-50FT |
| 100 Ft | F20BS-100FT |

Material: Molded Polyurethane with .032" Dia. Stainless Steel Core

Color: Red, Core Red. Aramid (Kevlar) Core Yellow

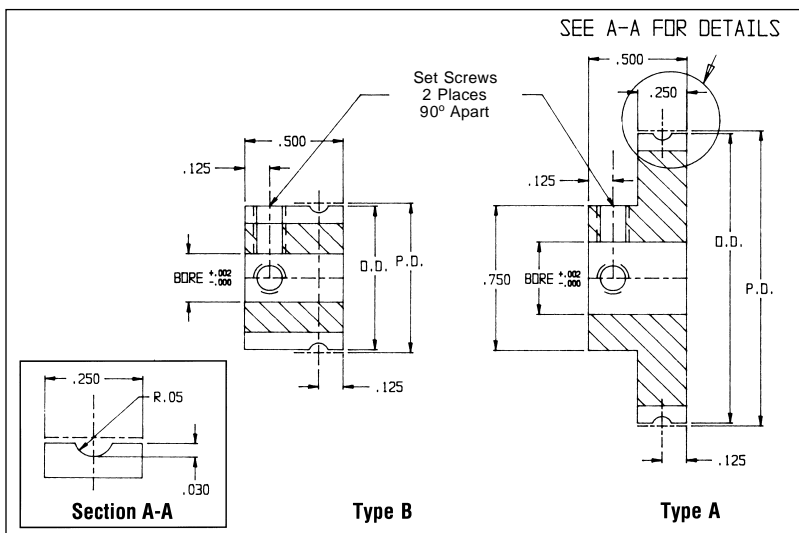
Maximum Tensile Strength: 50 Lbs.

Note: For maximum life use working tension of less than 10 lbs.

For field splicing use kit F20B-SK. See page 5-5.

NO-SLIDE TIMING PULLEYS

1/5 (.200) Pitch, No Flange Groove Pulleys for 1/4" Wide Belts



| No. of Teeth | Type | Pitch Dia. | Outside Dia. | STD Bore / Part Number | | |
|--------------|------|------------|--------------|------------------------|----------|----------|
| | | | | .250 | .375 | .500 |
| 10* | B | .6366 | .616 | F20P4-10 | — | — |
| 11* | B | .7003 | .680 | F20P4-11 | F20P6-11 | — |
| 12 | B | .7639 | .743 | F20P4-12 | F20P6-12 | F20P8-12 |
| 14 | A | .8913 | .871 | F20P4-14 | F20P6-14 | F20P8-14 |
| 15 | A | .9549 | .934 | F20P4-15 | F20P6-15 | F20P8-15 |
| 16 | A | 1.0186 | .998 | F20P4-16 | F20P6-16 | F20P8-16 |
| 17 | A | 1.0823 | 1.062 | F20P4-17 | F20P6-17 | F20P8-17 |
| 18 | A | 1.1459 | 1.125 | F20P4-18 | F20P6-18 | F20P8-18 |
| 19 | A | 1.2096 | 1.189 | F20P4-19 | F20P6-19 | F20P8-19 |
| 20 | A | 1.2732 | 1.253 | F20P4-20 | F20P6-20 | F20P8-20 |
| 21 | A | 1.3369 | 1.316 | F20P4-21 | F20P6-21 | F20P8-21 |
| 22 | A | 1.4006 | 1.380 | F20P4-22 | F20P6-22 | F20P8-22 |
| 23 | A | 1.4642 | 1.444 | F20P4-23 | F20P6-23 | F20P8-23 |
| 24 | A | 1.5279 | 1.507 | F20P4-24 | F20P6-24 | F20P8-24 |
| 25 | A | 1.5916 | 1.571 | F20P4-25 | F20P6-25 | F20P8-25 |
| 27 | A | 1.7189 | 1.698 | F20P4-27 | F20P6-27 | F20P8-27 |
| 28 | A | 1.7825 | 1.762 | F20P4-28 | F20P6-28 | F20P8-28 |
| 29 | A | 1.8462 | 1.826 | F20P4-29 | F20P6-29 | F20P8-29 |
| 30 | A | 1.9099 | 1.889 | F20P4-30 | F20P6-30 | F20P8-30 |
| 32 | A | 2.0372 | 2.017 | F20P4-32 | F20P6-32 | F20P8-32 |
| 36 | A | 2.2918 | 2.271 | F20P4-36 | F20P6-36 | F20P8-36 |
| 40 | A | 2.5465 | 2.526 | F20P4-40 | F20P6-40 | F20P8-40 |
| 42 | A | 2.6738 | 2.653 | F20P4-42 | F20P6-42 | F20P8-42 |
| 44 | A | 2.8011 | 2.781 | F20P4-44 | F20P6-44 | F20P8-44 |
| 45 | A | 2.8648 | 2.844 | F20P4-45 | F20P6-45 | F20P8-45 |
| 48 | A | 3.0558 | 3.035 | F20P4-48 | F20P6-48 | F20P8-48 |
| 50 | A | 3.1831 | 3.163 | F20P4-50 | F20P6-50 | F20P8-50 |
| 60 | A | 3.8197 | 3.799 | F20P4-60 | F20P6-60 | F20P8-60 |
| 72 | A | 4.5837 | 4.563 | F20P4-72 | F20P6-72 | F20P8-72 |

Material: 2024-T4 Aluminum (anodized before cutting)

Note: For metric bores prefix part numbers with letter M.
XX = number of teeth

8 mm bore part number: **MF20P8-XX**

10 mm bore part number: **MF20P10-XX**

12 mm bore part number: **MF20P12-XX**

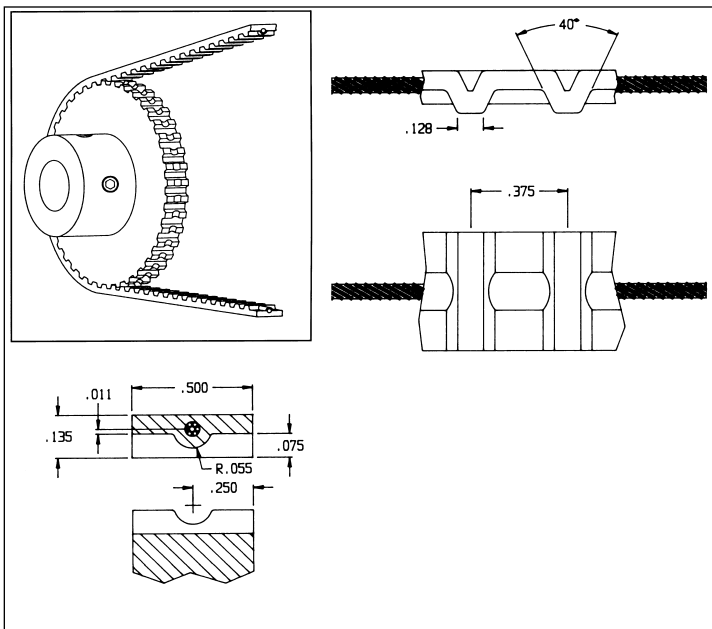
Example: Part number for a 1/5" pitch No-Slide pulley with 50 teeth and 12 mm bore is **MF20P12-50**

| Set Screw Size | | |
|----------------|-------|------------|
| Bore | | |
| Inch | 8 mm | 10 & 12 mm |
| 8-32 | M4X.7 | M5X.8 |

* Recommended for use as an idler only

NO-SLIDE TIMING BELTS

3/8" Pitch, 1/2" Wide — Polyurethane Belt



Material: Molded Polyurethane with .047" Diameter Stainless Steel Core

Color: Blue

Maximum Tensile Strength: 125 Lbs.

Note: For maximum life use working tension of less than 25 lbs.

| No Of Grooves | Length (Ref.) | Part Number | No Of Grooves | Length (Ref.) | Part Number |
|---------------|---------------|-------------|---------------|---------------|-------------|
| 20 | 7.500 | F37BS-20 | 98 | 36.750 | F37BS-98 |
| 22 | 8.250 | F37BS-22 | 100 | 37.500 | F37BS-100 |
| 24 | 9.000 | F37BS-24 | 104 | 39.000 | F37BS-104 |
| 26 | 9.750 | F37BS-26 | 108 | 40.500 | F37BS-108 |
| 28 | 10.500 | F37BS-28 | 112 | 42.000 | F37BS-112 |
| 30 | 11.250 | F37BS-30 | 116 | 43.500 | F37BS-116 |
| 33 | 12.375 | F37BS-33 | 120 | 45.000 | F37BS-120 |
| 36 | 13.500 | F37BS-36 | 124 | 46.500 | F37BS-124 |
| 40 | 15.000 | F37BS-40 | 128 | 48.000 | F37BS-128 |
| 45 | 16.875 | F37BS-45 | 132 | 49.500 | F37BS-132 |
| 50 | 18.750 | F37BS-50 | 136 | 51.000 | F37BS-136 |
| 56 | 21.000 | F37BS-56 | 140 | 52.500 | F37BS-140 |
| 60 | 22.500 | F37BS-60 | 144 | 54.000 | F37BS-144 |
| 64 | 24.000 | F37BS-64 | 148 | 55.500 | F37BS-148 |
| 68 | 25.500 | F37BS-68 | 152 | 57.000 | F37BS-152 |
| 72 | 27.000 | F37BS-72 | 156 | 58.500 | F37BS-156 |
| 80 | 30.000 | F37BS-80 | 160 | 60.000 | F37BS-160 |
| 86 | 32.250 | F37BS-86 | 176 | 66.000 | F37BS-176 |
| 92 | 34.500 | F37BS-92 | 180 | 67.500 | F37BS-180 |

Factory spliced belts are overmolded

For other length belts longer than the minimum listed, substitute the desired number of drive pins at the end of the part number.

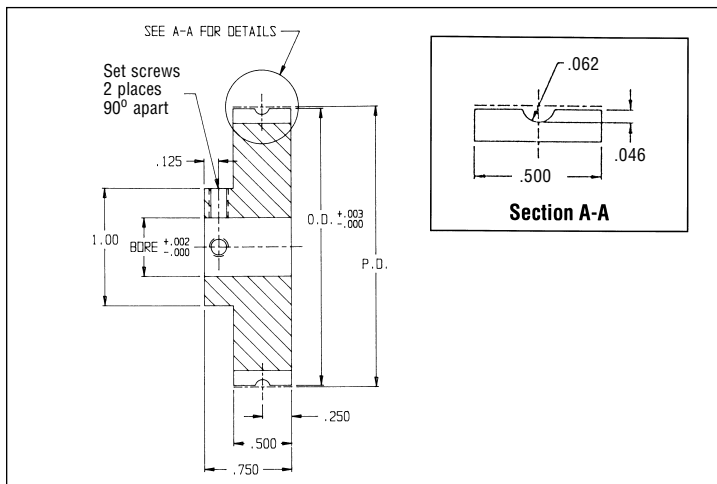
Bulk Lengths — Not Spliced

| Length | Part Number |
|--------|-------------|
| 5 Ft | F37BS-5FT |
| 10 Ft | F37BS-10FT |
| 25 Ft | F37BS-25FT |
| 50 Ft | F37BS-50FT |
| 100 Ft | F37BS-100FT |

For field splicing use kit F37B-SK. See page 5-5.

NO-SLIDE TIMING PULLEYS

3/8" Pitch, No-Flange Grooved Pulleys for 1/2" Wide Belts



Material: 2024-T4 Aluminum (anodized before cutting)

Note: For metric bores prefix part numbers with letter M
XX = number of teeth

8 mm bore part number: MF37P8-XX

10 mm bore part number: MF37P10-XX

12 mm bore part number: MF37P12-XX

Example: Part number for 3/8" pitch No-Slide pulley with 36 teeth and a 12 mm bore is MF37P12-36

| Set Screw Size | | |
|----------------|-------|------------|
| Bore | | |
| Inch | 8 mm | 10 & 12 mm |
| 8-32 | M4X.7 | M5X.8 |

| No. of Teeth | Pitch Dia. | Outside Dia. | Part No. / Bore Size | | |
|--------------|------------|--------------|----------------------|----------|----------|
| | | | .250 | .375 | .500 |
| 10* | 1.1937 | 1.164 | F37P4-10 | F37P6-10 | F37P8-10 |
| 11* | 1.3130 | 1.284 | F37P4-11 | F37P6-11 | F37P8-11 |
| 12 | 1.4324 | 1.403 | F37P4-12 | F37P6-12 | F37P8-12 |
| 13 | 1.5518 | 1.522 | F37P4-13 | F37P6-13 | F37P8-13 |
| 14 | 1.6711 | 1.642 | F37P4-14 | F37P6-14 | F37P8-14 |
| 15 | 1.7905 | 1.761 | F37P4-15 | F37P6-15 | F37P8-15 |
| 16 | 1.9099 | 1.880 | F37P4-16 | F37P6-16 | F37P8-16 |
| 17 | 2.0292 | 2.000 | F37P4-17 | F37P6-17 | F37P8-17 |
| 18 | 2.1486 | 2.119 | F37P4-18 | F37P6-18 | F37P8-18 |
| 19 | 2.2680 | 2.239 | F37P4-19 | F37P6-19 | F37P8-19 |
| 20 | 2.3873 | 2.358 | F37P4-20 | F37P6-20 | F37P8-20 |
| 21 | 2.5067 | 2.477 | F37P4-21 | F37P6-21 | F37P8-21 |
| 22 | 2.6261 | 2.597 | F37P4-22 | F37P6-22 | F37P8-22 |
| 24 | 2.8648 | 2.835 | F37P4-24 | F37P6-24 | F37P8-24 |
| 26 | 3.1035 | 3.074 | F37P4-26 | F37P6-26 | F37P8-26 |
| 28 | 3.3422 | 3.313 | F37P4-28 | F37P6-28 | F37P8-28 |
| 30 | 3.5810 | 3.552 | F37P4-30 | F37P6-30 | F37P8-30 |
| 32 | 3.8197 | 3.790 | F37P4-32 | F37P6-32 | F37P8-32 |
| 36 | 4.2972 | 4.268 | F37P4-36 | F37P6-36 | F37P8-36 |

* Recommended for use as an idler only

Note:

Other Size Bores Available, Consult Factory.

For unlisted number of teeth, specify the number of teeth desired as the last digits in the part number.