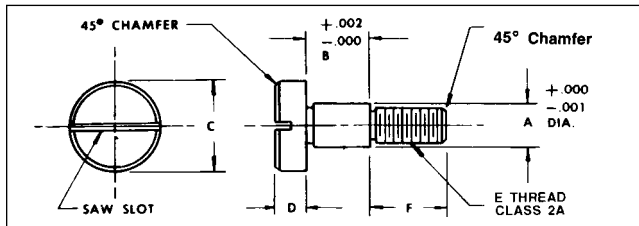


# SLOTTED HEAD SHOULDER SCREWS

## 303 & Hardened 416 Stainless Steel



**Material:** 303 Stainless Steel — 43XX  
416 Stainless Steel — 45XX (Hardness 26-32 RC)

A	B	C	D	E	F	303 P / N	416 P / N
1/8 .1245	1/8-.1255	1/4	1/8	# 4-40	5/32	4310	4510
	3/16-.1880					4311	4511
	1/4-.2505					4312	4512
	5/16-.3130					4313	4513
	3/8-.3755					4314	4514
5/32 .1557	1/8-.1255	9/32	1/8	# 6-32	3/16	4361	4561
	3/16-.1880					4362	4562
	1/4-.2505					4363	4563
	5/16-.3130					4364	4564
	3/8-.3755					4365	4565
3/16 .1870	1/8-.1255	5/16	5/32	# 8-32	3/16	4315	4515
	3/16-.1880					4316	4516
	1/4-.2505					4317	4517
	5/16-.3130					4318	4518
	3/8-.3755					4319	4519
	1/2-.5005					4320	4520
	5/8-.6255					4321	4521
	3/4-.7505					4322	4522
	1 - 1.0005					4323	4523
	1-1/4-1.2505					4324	4524
	1-1/2-1.5005					4325	4525

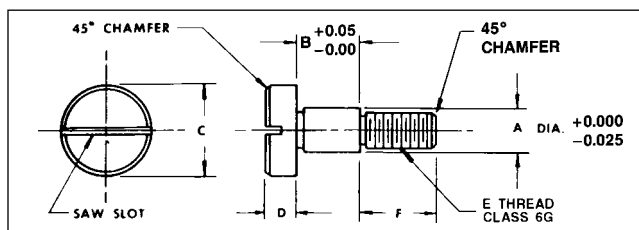
A	B	C	D	E	F	303 P / N	416 P / N
1/4 .2495	1/8-.1255	3/8	3/16	# 10-32	1/4	4326	4526
	3/16-.1880					4327	4527
	1/4-.2505					4328	4528
	5/16-.3130					4329	4529
	3/8-.3755					4330	4530
	1/2-.5005					4331	4531
	5/8-.6255					4332	4532
	3/4-.7505					4333	4533
	- 1.0005					4334	4534
	1-1/4-1.2505					4335	4535
	1-1/2-1.5005					4336	4536
5/16 .3120	1/4-.2505	1/2	7/32	1/4-20	7/16	4337	4537
	5/16-.3130					4338	4538
	3/8-.3755					4339	4539
	1/2-.5005					4340	4540
	5/8-.6255					4341	4541
3/4-.7505	4342	4542					
3/8 .3745	5/16-.3130	1/2	7/32	1/4-20	7/16	4343	4543
	3/8-.3755					4344	4544
	1/2-.5005					4345	4545
	5/8-.6255					4346	4546
3/8 .3745	5/16-.3130	9/16	1/4	5/16-18	1/2	4347	4547
	3/8-.3755					4348	4548
	1/2-.5005					4349	4549
1/2 .4995	1/2-.5005	3/4	5/16	3/8-16	5/8	4351	4551
	5/8-.6255					4352	4552
	3/4-.7505					4353	4553
	1 - 1.0005					4354	4554

Shoulder Screw Kits			Qty.	303 P / N	416 P / N
Shoulder Screws — Stainless Steel — Slotted and Socket Head. Assorted Lengths for shoulder dia. of 1/8" and thread of # 4-40			50	Y34K	Y37K
Shoulder Screws — Stainless Steel — Slotted and Socket Head. Assorted Lengths for shoulder dia. of 3/16" and thread of # 8-32			50	Y35K	Y38K
Shoulder Screws — Stainless Steel — Slotted and Socket Head. Assorted Lengths for shoulder dia. of 1/4" and thread of # 10-32			50	Y36K	Y39K

# METRIC SLOTTED HEAD SHOULDER SCREWS

## 303 & Hardened 416 Stainless Steel

All Dimensions in Millimeters



**Material:** 303 Stainless Steel — MSB1-XX  
416 Stainless Steel — MSB3-XX (Hardness 26-32 RC)

A	B	C	D	E	F	303 P / N	416 P / N
3.987 (4)	4.013 (4)	6	3	M3 x 0.5	4	MSB1-1	MSB3-1
	5.013 (5)					MSB1-2	MSB3-2
	6.013 (6)					MSB1-3	MSB3-3
	8.013 (8)					MSB1-4	MSB3-4
	10.013 (10)					MSB1-5	MSB3-5
4.987 (5)	4.013 (4)	8	4	M4 x 0.7	5	MSB1-6	MSB3-6
	5.013 (5)					MSB1-7	MSB3-7
	6.013 (6)					MSB1-8	MSB3-8
	8.013 (8)					MSB1-9	MSB3-9
	10.013 (10)					MSB1-10	MSB3-10
	12.013 (12)					MSB1-11	MSB3-11
	14.013 (14)					MSB1-12	MSB3-12
	16.013 (16)					MSB1-13	MSB3-13
	20.013 (20)					MSB1-14	MSB3-14
	25.013 (25)					MSB1-15	MSB3-15
	30.013 (30)					MSB1-16	MSB3-16
5.987 (6)	4.013 (4)	10	5	M5 x 0.8	6	MSB1-17	MSB3-17
	5.013 (5)					MSB1-18	MSB3-18
	6.013 (6)					MSB1-19	MSB3-19
	8.013 (8)					MSB1-20	MSB3-20

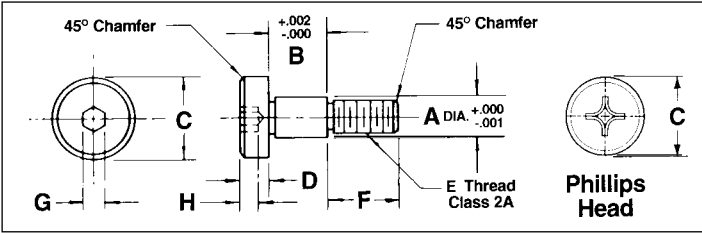
A	B	C	D	E	F	303 P / N	416 P / N
5.987 (6)	10.013 (10)	10	5	M5 x 0.8	6	MSB1-21	MSB3-21
	12.013 (12)					MSB1-22	MSB3-22
	14.013 (14)					MSB1-23	MSB3-23
	16.013 (16)					MSB1-24	MSB3-24
	20.013 (20)					MSB1-25	MSB3-25
	25.013 (25)					MSB1-26	MSB3-26
	30.013 (30)					MSB1-27	MSB3-27
7.987 (8)	6.013 (6)	12	6	M6 x 1	11	MSB1-28	MSB3-28
	8.013 (8)					MSB1-29	MSB3-29
	10.013 (10)					MSB1-30	MSB3-30
	12.013 (12)					MSB1-31	MSB3-31
	16.013 (16)					MSB1-32	MSB3-32
	20.013 (20)					MSB1-33	MSB3-33
9.987 (10)	8.013 (8)	12	6	M6 x 1	11	MSB1-34	MSB3-34
	10.013 (10)					MSB1-35	MSB3-35
	12.013 (12)					MSB1-36	MSB3-36
	16.013 (16)					MSB1-37	MSB3-37
9.987 (10)	8.013 (8)	14	7	M8 x 1.25	12	MSB1-38	MSB3-38
	10.013 (10)					MSB1-39	MSB3-39
	12.013 (12)					MSB1-40	MSB3-40
	16.013 (16)					MSB1-41	MSB3-41
	20.013 (20)					MSB1-42	MSB3-42
11.987 (12)	12.013 (12)	20	8	M10 x 1.5	16	MSB1-43	MSB3-43
	16.013 (16)					MSB1-44	MSB3-44
	20.013 (20)					MSB1-45	MSB3-45
	25.013 (25)						

Shoulder Screw Kits			Qty.	303 P / N	416 P / N
Shoulder Screws — Stainless Steel — Slotted and Socket Head. Assorted Lengths for shoulder dia. of 4mm and thread of M3 x 0.5			50	MAK19	MAK22
Shoulder Screws — Stainless Steel — Slotted and Socket Head. Assorted Lengths for shoulder dia. of 5mm and thread of M4 x 0.7			50	MAK20	MAK23
Shoulder Screws — Stainless Steel — Slotted and Socket Head. Assorted Lengths for shoulder dia. of 6mm and thread of M5 x 0.8			50	MAK21	MAK24

(continued)

# SOCKET & PHILLIPS HEAD SHOULDER SCREWS

303 & Hardened 416 Stainless Steel — Inch



**Material:** 303 Stainless Steel — 44XX  
416 Stainless Steel — 46XX (Hardness 26-32 RC)

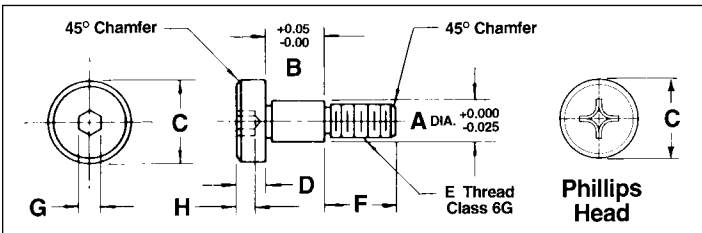
**\*Phillips Head** — Substitute the following prefix  
303 Stainless Steel = 47XX  
416 Stainless Steel = 48XX (Hardness 26-32 RC)

A	B	C	D	E	F	G	H (min.)	303 P/N	416 P/N	*Drive Size
1/8 .1245	1/8- .1255	1/4	1/8	# 4-40	5/32	5/64	1/16	4410	4610	1
	3/16- .1880							4411	4611	
	1/4- .2505							4412	4612	
	5/16- .3130							4413	4613	
	3/8- .3755							4414	4614	
5/32 .1557	1/8- .1255	9/32	1/8	# 6-32	3/16	3/32	5/64	4461	4661	Phillips Currently Unavailable
	3/16- .1880							4462	4662	
	1/4- .2505							4463	4663	
	5/16- .3130							4464	4664	
	3/8- .3755							4465	4665	
3/16 .1870	1/8- .1255	5/16	5/32	# 8-32	3/16	3/32	5/64	4415	4615	2
	3/16- .1880							4416	4616	
	1/4- .2505							4417	4617	
	5/16- .3130							4418	4618	
	3/8- .3755							4419	4619	
	1/2- .5005							4420	4620	
	5/8- .6255							4421	4621	
	3/4- .7505							4422	4622	
	1 - 1.0005							4423	4623	
	1-1/4- 1.2505							4424	4624	
	1-1/2- 1.5005							4425	4625	

A	B	C	D	E	F	G	H (min.)	303 P/N	416 P/N	*Drive Size
1/4 .2495	1/8- .1255	3/8	3/16	# 10-32	1/4	1/8	3/32	4426	4626	2
	3/16- .1880							4427	4627	
	1/4- .2505							4428	4628	
	5/16- .3130							4429	4629	
	3/8- .3755							4430	4630	
	1/2- .5005							4431	4631	
	5/8- .6255							4432	4632	
	3/4- .7505							4433	4633	
	1 - 1.0005							4434	4634	
	1-1/4- 1.2505							4435	4635	
	1-1/2- 1.5005							4436	4636	
5/16 .3120	1/4- .2505	1/2	7/32	1/4-20	7/16	5/32	1/8	4437	4637	3
	5/16- .3130							4438	4638	
	3/8- .3755							4439	4639	
	1/2- .5005							4440	4640	
	5/8- .6255							4441	4641	
3/4- .7505	4442	4642								
3/8 .3745	5/16- .3130	1/2	7/32	1/4-20	7/16	5/32	1/8	4443	4643	3
	3/8- .3755							4444	4644	
	1/2- .5005							4445	4645	
	5/8- .6255							4446	4646	
3/8 .3745	5/16- .3130	9/16	1/4	5/16-18	1/2	3/16	5/32	4447	4647	4
	3/8- .3755							4448	4648	
	1/2- .5005							4449	4649	
	5/8- .6255							4450	4650	
1/2 .4995	1/2- .5005	3/4	5/16	3/8-16	5/8	1/4	3/16	4451	4651	4
	5/8- .6255							4452	4652	
	3/4- .7505							4453	4653	
	1 - 1.0005							4454	4654	

Shoulder Screw Kits	Qty.	303 P/N	416 P/N
Shoulder Screws — Stainless Steel — Slotted and Socket Head. Assorted Lengths for shoulder dia. of 1/8" and thread of # 4-40	50	Y34K	Y37K
Shoulder Screws — Stainless Steel — Slotted and Socket Head. Assorted Lengths for shoulder dia. of 3/16" and thread of # 8-32	50	Y35K	Y38K
Shoulder Screws — Stainless Steel — Slotted and Socket Head. Assorted Lengths for shoulder dia. of 1/4" and thread of # 10-32	50	Y36K	Y39K

303 & Hardened 416 Stainless Steel — Metric



**Material:** 303 Stainless Steel — MSB2-XX  
416 Stainless Steel — MSB4-XX (Hardness 26-32 RC)

**\*Phillips Head** — Substitute the following prefix  
303 Stainless Steel = MSB7-XX  
416 Stainless Steel = MSB8-XX (Hardness 26-32 RC)

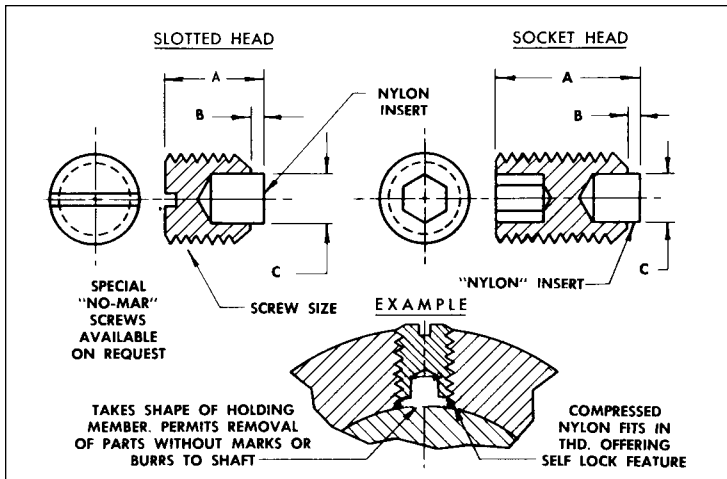
A	B	C	D	E	F	G	H (min.)	303 P/N	416 P/N	*Drive Size
3.987 (4)	4.013 (4)	6	3	M3 x 0.5	4	2	1.6	MSB2-1	MSB4-1	1
	5.013 (5)							MSB2-2	MSB4-2	
	6.013 (6)							MSB2-3	MSB4-3	
	8.013 (8)							MSB2-4	MSB4-4	
	10.013 (10)							MSB2-5	MSB4-5	
4.987 (5)	4.013 (4)	8	4	M4 x 0.7	5	2.5	2	MSB2-6	MSB4-6	2
	5.013 (5)							MSB2-7	MSB4-7	
	6.013 (6)							MSB2-8	MSB4-8	
	8.013 (8)							MSB2-9	MSB4-9	
	10.013 (10)							MSB2-10	MSB4-10	
	12.013 (12)							MSB2-11	MSB4-11	
	14.013 (14)							MSB2-12	MSB4-12	
	16.013 (16)							MSB2-13	MSB4-13	
	20.013 (20)							MSB2-14	MSB4-14	
	25.013 (25)							MSB2-15	MSB4-15	
	30.013 (30)							MSB2-16	MSB4-16	
5.987 (6)	4.013 (4)	10	5	M5 x 0.8	6	3	2.4	MSB2-17	MSB4-17	2
	5.013 (5)							MSB2-18	MSB4-18	
	6.013 (6)							MSB2-19	MSB4-19	
	8.013 (8)							MSB2-20	MSB4-20	

A	B	C	D	E	F	G	H (min.)	303 P/N	416 P/N	*Drive Size
5.987 (6)	10.013 (10)	10	5	M5 x 0.8	6	3	2.4	MSB2-21	MSB4-21	2
	12.013 (12)							MSB2-22	MSB4-22	
	14.013 (14)							MSB2-23	MSB4-23	
	16.013 (16)							MSB2-24	MSB4-24	
	20.013 (20)							MSB2-25	MSB4-25	
	25.013 (25)							MSB2-26	MSB4-26	
	30.013 (30)							MSB2-27	MSB4-27	
7.987 (8)	6.013 (6)	12	6	M6 x 1	11	4	3.2	MSB2-28	MSB4-28	3
	8.013 (8)							MSB2-29	MSB4-29	
	10.013 (10)							MSB2-30	MSB4-30	
	12.013 (12)							MSB2-31	MSB4-31	
	16.013 (16)							MSB2-32	MSB4-32	
	20.013 (20)							MSB2-33	MSB4-33	
9.987 (10)	8.013 (8)	12	6	M6 x 1	11	4	3.2	MSB2-34	MSB4-34	3
	10.013 (10)							MSB2-35	MSB4-35	
	12.013 (12)							MSB2-36	MSB4-36	
	16.013 (16)							MSB2-37	MSB4-37	
9.987 (10)	8.013 (8)	14	7	M8 x 1.25	12	5	4	MSB2-38	MSB4-38	4
	10.013 (10)							MSB2-39	MSB4-39	
	12.013 (12)							MSB2-40	MSB4-40	
	16.013 (16)							MSB2-41	MSB4-41	
11.987 (12)	12.013 (12)	20	8	M10 x 1.5	16	6	4.8	MSB2-42	MSB4-42	4
	16.013 (16)							MSB2-43	MSB4-43	
	20.013 (20)							MSB2-44	MSB4-44	
	25.013 (25)							MSB2-45	MSB4-45	

Shoulder Screw Kits	Qty.	303 P/N	416 P/N
Shoulder Screws — Stainless Steel — Slotted and Socket Head. Assorted Lengths for shoulder dia. of 4mm and thread of M3 x 0.5	50	MAK19	MAK22
Shoulder Screws — Stainless Steel — Slotted and Socket Head. Assorted Lengths for shoulder dia. of 5mm and thread of M4 x 0.7	50	MAK20	MAK23
Shoulder Screws — Stainless Steel — Slotted and Socket Head. Assorted Lengths for shoulder dia. of 6mm and thread of M5 x 0.8	50	MAK21	MAK24

# "NO-MAR" SET SCREWS

Inch and Metric



### Features:

- "No-Mar" Set Screws are self-locking as expanding nylon insert compresses against shaft and into thread of holding member
- Parts may be assembled or dis-assembled numerous times without damage to the shaft
- "No-Mar" Set Screws afford secure full force contact regardless of shape of the shaft
- "No-Mar" Set Screws will not scratch, mar or deform the opposing surface

Material: Screw — Stainless Steel  
Insert — Nylon

Sold in Increments of 10 Pieces.

### SOCKET HEAD — Class 3A

Screw Size	A	B	C	Part No.
# 2-56	5/32	1/32	1/32	CS-8
	9/32			CS-24
# 4-40	5/32	1/32	1/16	CS-9
	9/32			CS-25
	13/32			CS-26
# 6-32	5/32	1/32	1/16	CS-10
	9/32			CS-15
	17/32			CS-27
# 8-32	15/64	3/64	3/32	CS-11
	27/64			CS-16
	43/64			CS-28
#10-24	15/64	3/64	3/32	CS-12
	27/64			CS-17
#10-32	15/64	3/64	3/32	CS-13
	27/64			CS-18
	43/64			CS-29
1/4-20	5/16	1/16	1/8	CS-14
	7/16			CS-19
	13/16			CS-30
	1- 1/16			CS-31
1/4-28	7/16	1/16	1/8	CS-20
5/16-18	19/32	3/32	3/16	CS-21
	27/32			CS-32
	1- 3/32			CS-33
3/8-16	19/32	3/32	3/16	CS-22
	27/32			CS-34
	1- 3/32			CS-35
1/2-13	3/4	1/8	1/4	CS-23
	1- 1/8			CS-36

### SLOTTED HEAD — Class 2A

Screw Size	A	B	C	Part No.
# 2-56	5/32	1/32	1/32	CS-1
# 4-40	5/32	1/32	1/16	CS-2
# 6-32	5/32	1/32	1/16	CS-3
# 8-32	15/64	3/64	3/32	CS-4
#10-24	15/64	3/64	3/32	CS-5
#10-32	15/64	3/64	3/32	CS-6
1/4-20	5/16	1/16	1/8	CS-7

### SOCKET HEAD — Class 6G

Dimensions Below Are In Millimeters.

Screw Size	A	B	C	Part No.
M2 x 0.4	3.8	0.8	0.8	MSS2-1
	4.8			MSS2-2
	5.8			MSS2-3
	6.8			MSS2-4
M3 x 0.5	3.8	0.8	1.6	MSS2-5
	4.8			MSS2-6
	5.8			MSS2-7
	6.8			MSS2-8
M4 x 0.7	5.2	1.2	2.4	MSS2-9
	7.2			MSS2-10
	11.2			MSS2-11
	15.2			MSS2-12
M5 x 0.8	7.2	1.2	2.4	MSS2-13
	11.2			MSS2-14
	15.2			MSS2-15
	21.2			MSS2-16
M6 x 1	7.6	1.6	3.2	MSS2-17
	11.6			MSS2-18
	17.6			MSS2-19
	26.6			MSS2-20
M10 x 1.5	14.4	2.4	4.8	MSS2-21
	22.4			MSS2-22
	32.4			MSS2-23

### "NO-MAR" KITS

Description of Contents	Number of Parts	Part No.
"No-Mar" Set Screws-Stainless Steel Hex Head. Assorted Sizes from #2-56 to #10-32	100	Y18K
"No-Mar" Set Screws-Stainless Steel Hex Head. Assorted Sizes from #10-32 to 1/2-13	75	Y19K

### METRIC "NO-MAR" KITS

Description of Contents	Number of Parts	Part No.
"No-Mar" Set Screws-Socket, Hexagon Type, stainless steel. Assorted sizes from M2 x 0.4 to M4 x 0.7.	100	MAK13
"No-Mar" Set Screws-Socket, Hexagon Type, stainless steel. Assorted sizes from M5 x 0.8 to M10 x 1.5	75	MAK14

# "SILVER-GRIP" SET SCREWS

Inch and Metric

## How It Works: The "Silver-Grip" Inset

This diagram shows how the principle works. Note the pellet of silver alloy inset into the nose of the gear. The silver is just soft enough so that it adjusts, as you tighten the set screw, to mate with the exact contours of the opposing surface. The silver and shaft are in complete contact with each other over the total surface of the point of the screw. No wonder that no other set screw has greater holding power than the "Silver-Grip."

### Never Mars The Opposing Surface

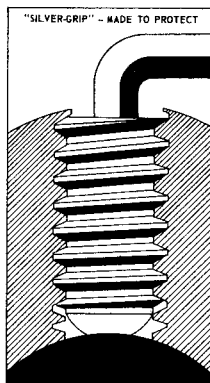
No matter how much torque you apply to the socket head, the "Silver-Grip" set screw will not scratch, mar or deform the opposing surface. When you remove the set screw, the surface will be as smooth as new!

### Unscrews Easily

When it's time to re-set, the "Silver-Grip" unscrews without creating any problems — no heaving and twisting, no grunting and groaning.

### Use It Over And Over

And you can reset the "Silver-Grip" over and over again, with the same perfect results you enjoy the first time you use it. The "Silver-Grip" is ideally suited — it's a must for any situation where a set screw must be periodically re-set or removed.



\* Nominal Screw length excludes silver tip

300 Series Stainless Steel.  
Class 3A Threads

Screw Size	L *	Part No.
# 2-56	1/8	CS-51
# 4-40	1/8	CS-52
	1/4	CS-53
# 6-32	1/8	CS-54
	1/4	CS-55
# 8-32	3/16	CS-56
	3/8	CS-57
#10-32	3/16	CS-59
	3/8	CS-60
1/4 -20	1/4	CS-61
	3/8	CS-62
5/16-18	1/2	CS-64
	3/4	CS-65
3/8 -16	1/2	CS-66
	1	CS-67

## "SILVER-GRIP" KITS

Description of Contents	Number of Parts	Part No.
"Silver-Grip" Set Screws-Stainless Steel. Hex Head. Assorted Sizes from #4-40 to #8-32.	75	Y20K
"Silver-Grip" Set Screws-Stainless Steel. Hex Head. Assorted Sizes from #8-32 to 1/4-20.	75	Y21K
"Silver-Grip" Set Screws-Stainless Steel. Hex Head. Assorted Sizes from 1/4-20 to 3/8-16.	75	Y22K

## METRIC "SILVER-GRIP" KITS

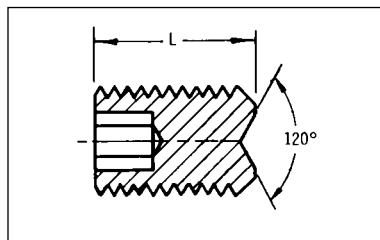
Description of Contents	Number of Parts	Part No.
"Silver-Grip" Set Screws-Socket Hexagon Type, stainless steel. Assorted lengths in sizes M2 x 0.4 and M3 x 0.5	75	MAK15
"Silver-Grip" Set Screws-Socket, Hexagon Type, stainless steel. Assorted lengths in sizes M4 x 0.7 and M5 x 0.8.	75	MAK16
"Silver-Grip" Set Screws-Socket, Hexagon Type, stainless steel. Assorted lengths in sizes M6 x 1 to M10 x 1.5.	75	MAK17

Dimensions Below Are In Millimeters.

Screw Size	L *	Part No.
M2 x 0.4	3	MSS3-1
	4	MSS3-2
	5	MSS3-3
	6	MSS3-4
M3 x 0.5	3	MSS3-5
	4	MSS3-6
	5	MSS3-7
	6	MSS3-8
M4 x 0.7	4	MSS3-9
	6	MSS3-10
	10	MSS3-11
	14	MSS3-12
M5 x 0.8	6	MSS3-13
	10	MSS3-14
	14	MSS3-15
	20	MSS3-16
M6 x 1	6	MSS3-17
	10	MSS3-18
	16	MSS3-19
	25	MSS3-20
M10 x 1.5	12	MSS3-21
	20	MSS3-22
	30	MSS3-23

# SET SCREWS — CUP POINT

Conforming To DIN 916



Material: 300 Series Stainless Steel

## SOCKET HEAD

Screw Size	L	Part No.
# 0-80	1/8	Y11-1
	3/16	Y11-2
# 2-56	1/8	Y11-3
	3/16	Y11-4
	1/4	Y11-5
# 4-40	1/8	Y11-6
	3/16	Y11-7
	1/4	Y11-8
# 6-32	1/8	Y11-9
	1/4	Y11-10
	3/8	Y11-11
	1/2	Y11-12
# 8-32	1/4	Y11-13
	3/8	Y11-14
	1/2	Y11-15
	5/8	Y11-16
#10-32	1/4	Y11-17
	1/2	Y11-18
	3/4	Y11-19
1/4-20	1/2	Y11-22
	3/4	Y11-23

## SLOTTED HEAD

Screw Size	L	Part No.
#0-80	1/8	C2-15
#2-56	1/8	BE-1-A
#4-40	1/8	BE-2-A
#6-32	1/8	BE-3-A

## SOCKET HEAD

Dimensions Below Are In Millimeters.

Screw Size	L	Part No.
M1.6 x 0.35	3	MSS4-1
	4	MSS4-2
	5	MSS4-3
M2 x 0.4	3	MSS4-4
	4	MSS4-5
	5	MSS4-6
M2 x 0.4	6	MSS4-7
	3	MSS4-8
	4	MSS4-9
M3 x 0.5	5	MSS4-10
	6	MSS4-11
	4	MSS4-12
M4 x 0.7	6	MSS4-13
	10	MSS4-14
	14	MSS4-15
M5 x 0.8	6	MSS4-16
	10	MSS4-17
	14	MSS4-18
M5 x 0.8	20	MSS4-19
	6	MSS4-20
	10	MSS4-21
M6 x 1	16	MSS4-22
	25	MSS4-23
	12	MSS4-24
M10 x 1.5	20	MSS4-25
	30	MSS4-26

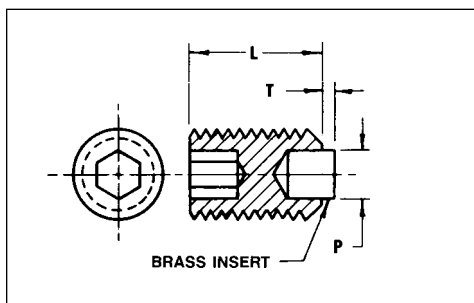
## SET SCREWS-CUP POINT KITS

Description of Contents	Number of Parts	Part No.
Cup Point Set Screws-Stainless Steel, Hex Head. Assorted Sizes from #2-56 to 1/4-20.	200	Y23K

## METRIC SET SCREWS-CUP POINT KITS

Description of Contents	Number of Parts	Part No.
Socket Set Screws-Hexagon Type. Cup Point, stainless steel. Assorted Sizes from M1.6 x 0.35 to M10 x 1.5.	200	MAK18

# BRASS TIP SET SCREWS



Material: Heat treated alloy steel with brass insert  
Finish: Black Oxide

Screw Size	L	P	T	Part No.
2-56	1/8	1/32	1/32	CS-85
	1/4			CS-86
4-40	1/8	1/16	1/32	CS-87
	1/4			CS-88
	3/8			CS-89
6-32	1/8	1/16	1/32	CS-90
	1/4			CS-91
	1/2			CS-92
8-32	1/8	7/64	3/64	CS-93
	1/4			CS-94
	3/8			CS-95
	1/2			CS-96
10-32	1/4	1/8	3/64	CS-97
	3/8			CS-98
	1/2			CS-99